

KERANG ACTIVE RECREATION CORRIDOR MASTERPLAN

DRAFT MASTERPLAN



We acknowledge First Nations peoples and their continuing connection to land, waters and culture, because we strongly believe in reconciliation and collaborative engagement for a better future.

We pay our respects to Elders past, present and emerging, whose knowledge, traditions and stories guide custodianship on what will always be their ancestral lands.

CONTENTS

01. INTRODUCTION	4
02. POLICIES & STUDIES	6
03. DEMOGRAPHIC ANALYSIS	8
04. CONTEXT ANALYSIS	10
• LAND USE	
• ACCESS & MOVEMENT CORRIDORS	
• ABORIGINAL CULTURAL SENSITIVITY	
• CROWN LAND	
05. VISION	15
06. ATKINSON PARK	17
• SUMMARY	
• EXISTING SITE	
• OPPORTUNITIES & CONSTRAINTS	
• CONCEPT PLAN	
07. KERANG REGIONAL PARK	22
• SUMMARY	
• EXISTING SITE	
• OPPORTUNITIES & CONSTRAINTS	
• CONCEPT PLAN	
08. RIVERSIDE PARK RECREATION RESERVE	29
• SUMMARY	
• EXISTING SITE	
• OPPORTUNITIES & CONSTRAINTS	
• CONCEPT PLAN	
09. SIR JOHN GORTON LIBRARY	36
• SUMMARY	
• EXISTING SITE	
• OPPORTUNITIES & CONSTRAINTS	
10. APPENDICES	40
• 1. STRATEGIC DOCUMENTS SUMMARY	
• 2. USER MATRICES	
• 3. CONSULTATION FEEDBACK SUMMARY	



INTRODUCTION

01

INTRODUCTION & EXECUTIVE SUMMARY

Introduction

Kerang is a town located in northern Victoria, within Gannawarra Shire Council. The Shire has a population of over 10,000 people.

The project outcomes will provide important open space, sport and recreation opportunities for the townships through an implementation strategy spanning the next 10+ years.

The masterplan will provide information and establish recommendations to assist Council in ongoing development of the sites through determining the community's need, asset requirements and exploration of alternative opportunities.

Locations:

- Atkinson Park
- Kerang Regional Park
- Riverside Park Recreation Reserve
- Sir John Gorton Library

Executive Summary

Group GSA was commissioned in October 2022 by Gannawarra Shire Council to develop a masterplan for the Kerang Active Recreation Corridor outlined in the project brief.

Based on the project brief including objectives and aspirations for the project, this document covers the site analysis on current conditions of the four site locations, as well as a demographic assessment to identify future needs and the development of a strategic masterplan based on previously completed studies.

The masterplan of the key recreation sites within Kerang will drive coordinated and targeted future investment, whilst also considering future demand for organised sport and active recreation opportunities and linkages across key sites. It will review Council's existing plans and strategies to the relevant sites, and engagement with stakeholders and the wider community.

Each site will have an individual site plan developed recognising future opportunities and priorities, whilst highlighting how these link to the identified needs.

Project Objectives

1. Consolidate strategic directions and actions for the development of community sports and recreation facilities within Kerang
2. Undertake a demographic analysis of Kerang's recreation facility catchment areas
3. Explore activation opportunities to improve user access, inclusiveness, connectivity and safety. Establish a participation/activation plan for the different sites
4. Foster partnerships, involve community and user groups to identify trends and demands for community sport and active recreation
5. Assess the current management model for facilities and provide recommendations on the most effective model for the future
6. Review and assess the current provision of recreation facilities, programs and services provided
7. Research and identify the short, medium and long term needs of users occupying facilities
8. Complete a visual condition assessment of the infrastructure (including walking tracks) and determine condition and future lifespan in alignment with industry standards
9. Determine impacts of climate change. e.g. vulnerabilities of each site to a climate predicted to become more prone to extreme weather conditions
10. Identifying facility development requirements to improve environmental and financial sustainability
11. Ensure facilities are compliant to State Sporting Associations facility guidelines and State Government Policy
12. Identify priorities for the future planning, development and/or upgrade of existing and/or new facilities/ infrastructure within the Gannawarra Shire in response to identified needs
13. Provide individual site plans of each of the four site locations highlighting future development opportunities within the areas
14. Provide a 10 year development plan based on review of existing plans, and condition assessments
15. Provide financial estimates of the proposed developments
16. Ensure the masterplan is responsive to community expectations as well as being achievable, realistic and attainable within the Councils' and communities budgetary framework

17. Include a thorough financial analysis of the proposed options and capacity of Council to undertake the recommendations
18. Identify potential funding opportunities to assist Council in implementing recommendations

The top 3 Infrastructure issues

- 1 Facilities not meeting preferred sporting guidelines or appropriately catering for female use
- 2 End of life assets and ageing single purpose facilities
- 3 Gap in the provision of facilities to support active recreation and unstructured activities

Planning and Development principles

-  Ensuring facilities meet modern standards and are multi-use
-  Facilities to address diversity and gender equity needs
-  Achieving community health outcomes, social connection and economic benefits





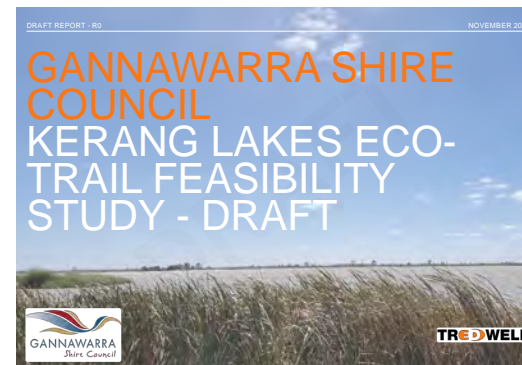
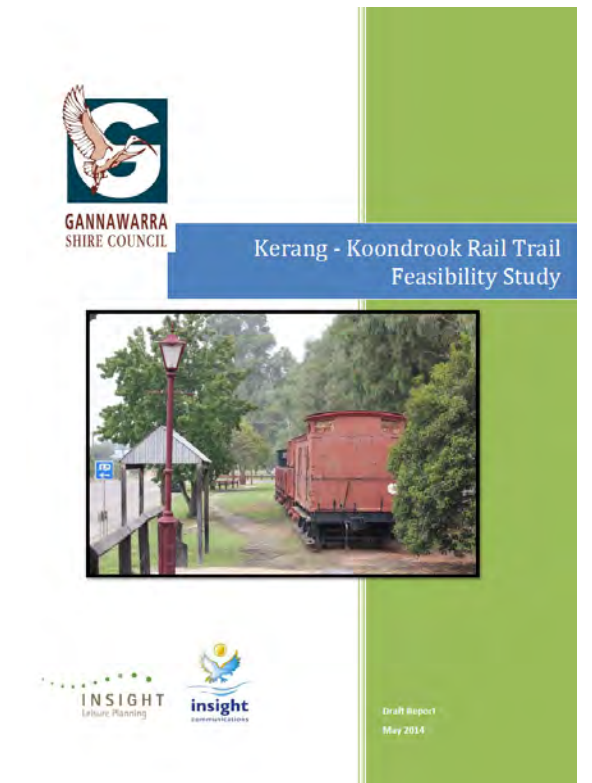
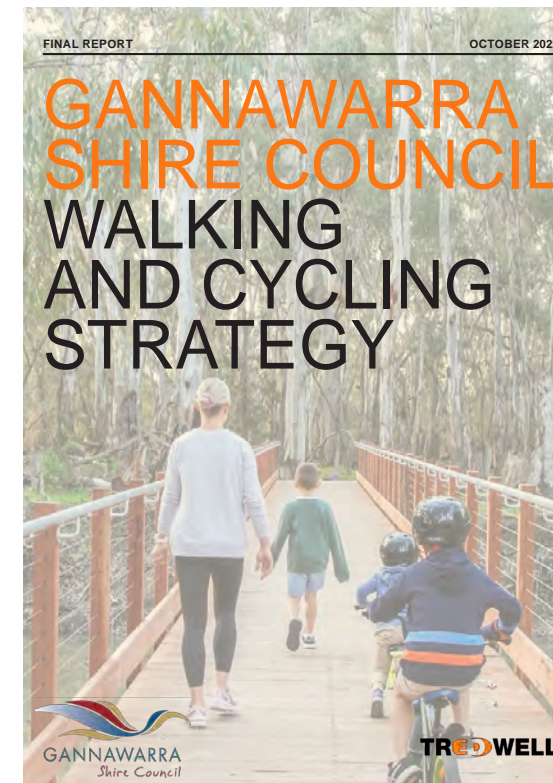
POLICIES & STUDIES

02

STRATEGIC DOCUMENTS

Key Council Strategic Documents:

- Sports and Recreation Strategy (2019)
- Riverside Park Masterplan (2012)
- Synthetic Hockey Feasibility Study (2009)
- Walking and Cycling Strategy
- Aquatic Strategy
- Kerang – Koondrook Rail Trail Feasibility Study (2014)
- Kerang Lakes Eco-Trail Feasibility Study
- Gannawarra Shire Council Plan (2021-2025)



Note: Refer Appendix 1 for documents summary



DEMOGRAPHIC ANALYSIS

03

DEMOGRAPHICS

Gannawarra Shire

Population: 10,683 (49.7% M, 50.3% F)

Median age: 51

Children aged 0-19 made up 16% of the population, people aged 60 years and over made up 38.5% of the population.

The most common ancestries in Gannawarra Shire were Australian, English and Scottish.

In Gannawarra Shire, 85.7% of people were born in Australia.

(Data source: Census 2021)

Kerang

Population: 3,696 (47.9% M, 52.1% F)

Median age: 51

3.9% of Kerang's population is Aboriginal and/or Torres Strait Islander people.

Children ages 0-14 years made 16.4% of the population and people aged 65 years and over made up 30.6% of the population.

In Kerang, 86.4% of people were born in Australia. The most common countries of birth were England 1.5%, Philippines 0.6%, South Africa 0.6%, New Zealand 0.4% and India 0.4%.

(Data source: Census 2021)

Community Profile

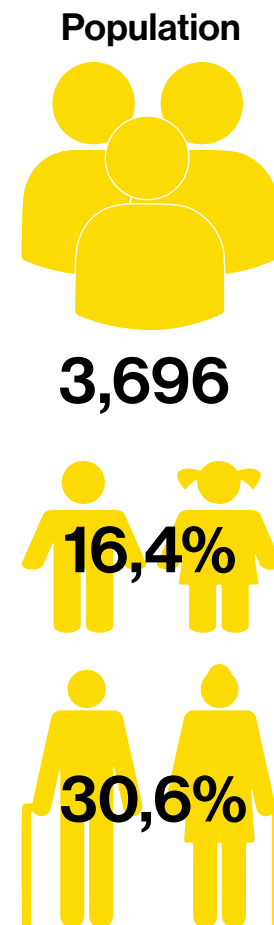
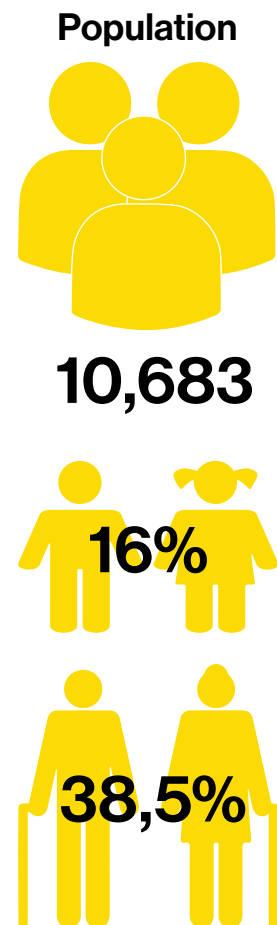
- + Gannawarra Shire experienced a 3% population growth from 2011 (10,366) to 2021 (10,683). Applying this same growth rate to 2031 will result in a total forecast population of approximately 11,000.
- + Gannawarra Shire is an ageing population. There has been a gradual population increase of people aged from 30-69.
- + Residents aged between 20-29 has dropped. This is most likely due to education, training and employment opportunities not present.
- + An opportunity to use sports and active recreation to attract young adults and families.
- + Catering to the ageing population is important. Kerang should provide a range of suitable and adequate infrastructure, facilities, formalised sports and active recreation to support the community, including intergenerational and all-abilities facilities.
- + Kerang provides facilities to suit community level sport. Participants of higher level sports travel to Swan Hill, Bendigo or Echuca.
- + 3,518 residents of Gannawarra Shire participate in formalised sport between the ages of 5-39 years old, (2021).

Health and Physical Indicators

- + Gannawarra Shire has a higher well-being score (80.3%) compared to the state average (77%), however they do less physical activity (26%) compared to the rest of the state (19%).
- + 21% of the Gannawarra Shire engage in 'organised' physical activity, and 65% participate in 'non-organised' activity. 'Non-organised' activity includes walking and cycling.
- + Gannawarra Shire has a higher percentage of people classified as obese, overweight and poor health, in comparison to the rest of the state.

State Wide Participation Data

- + The data collected by Sports Australia in 2021-2022 indicates that walking, fitness/gym, athletics/running, cycling, and swimming are the top activities undertaken by adults.
- + Children participate in more organised sports, including swimming, AFL, basketball, gymnastics and dancing.





CONTEXT & ANALYSIS

04

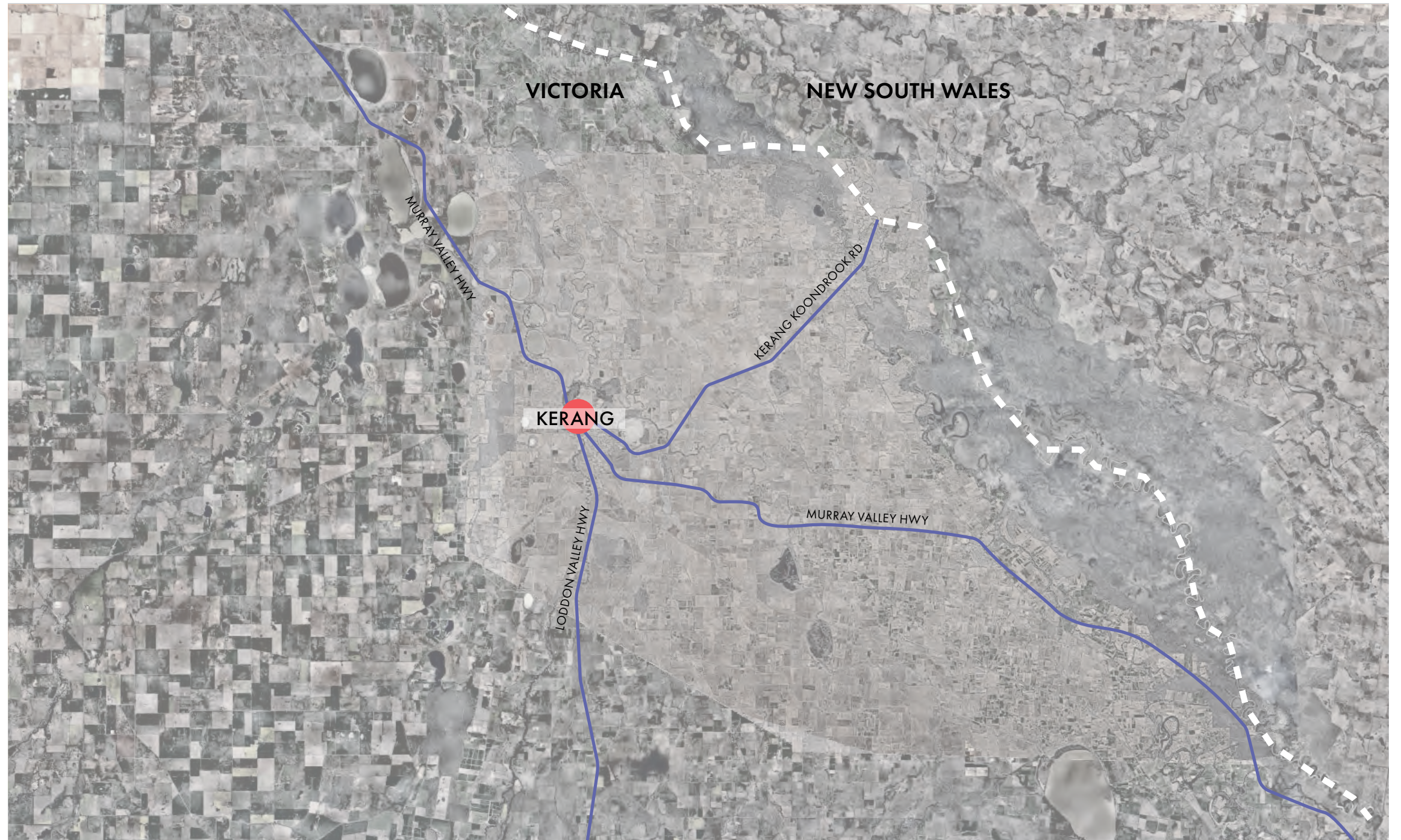
REGIONAL CONTEXT

Gannawarra Shire Council is situated north-west of Victoria. It covers approximately 3,735 square kilometres and has a population of 10,683 people.

Located on the Murray River, the Gannawarra is just 1.25 hours from Bendigo, 40 minutes from Swan Hill and 3 hours from Melbourne. Kerang and Cohuna are the two central townships of Gannawarra Shire.



We acknowledge the Barapa Barapa and Wemba-Wemba Peoples as the First Peoples and Traditional Custodians of the Kerang District and would look to embed their lore, history and legacy in the outcomes of these works.



SITE EXTENTS

Site Locations

1. Atkinson Park

In close proximity to Kerang CBD, adjacent to the Kerang Tennis Club, Kerang Lawn Bowls Club and Kerang Caravan Park.

2. Kerang Regional Park

Parkland across Loddon River, between the rail line and Murray Valley Highway.

3. Riverside Park Recreation Reserve




Located north-west from Kerang CBD. Accessible through Wyndham Street and Scoresey Street.

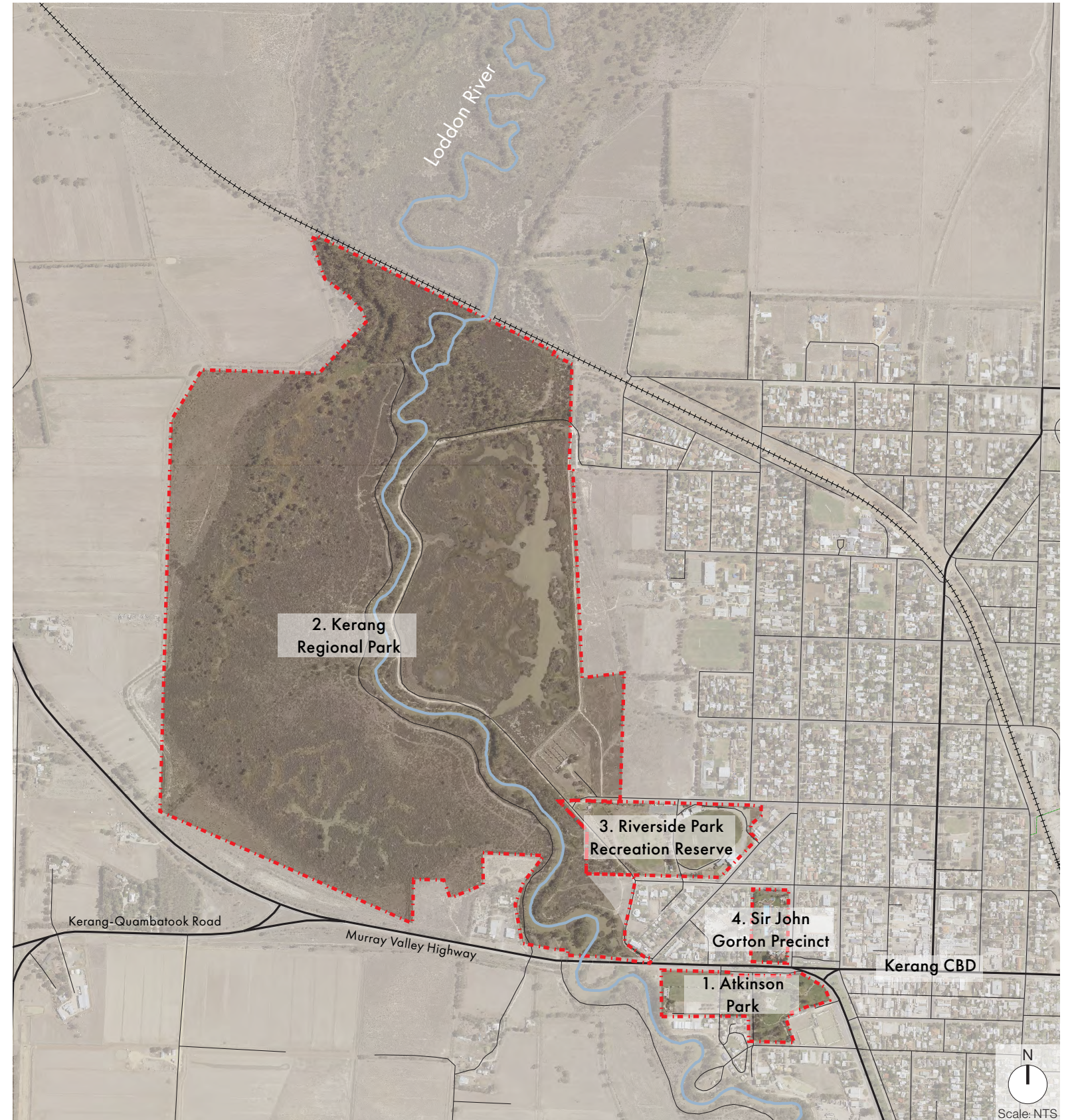
4. Sir John Gorton Library

Kerang Swimming Pool and Kerang Library is located within the Sir John Gorton Precinct. Entrance is through Shadforth Street, which can be accessed through Scoresey Street and Wellington Street.

Note: Council to act as advocate on all non-council owned land developments. Refer to Crown Land map on Analysis document.

Legend:

-  Site extents
-  Road
-  Waterway

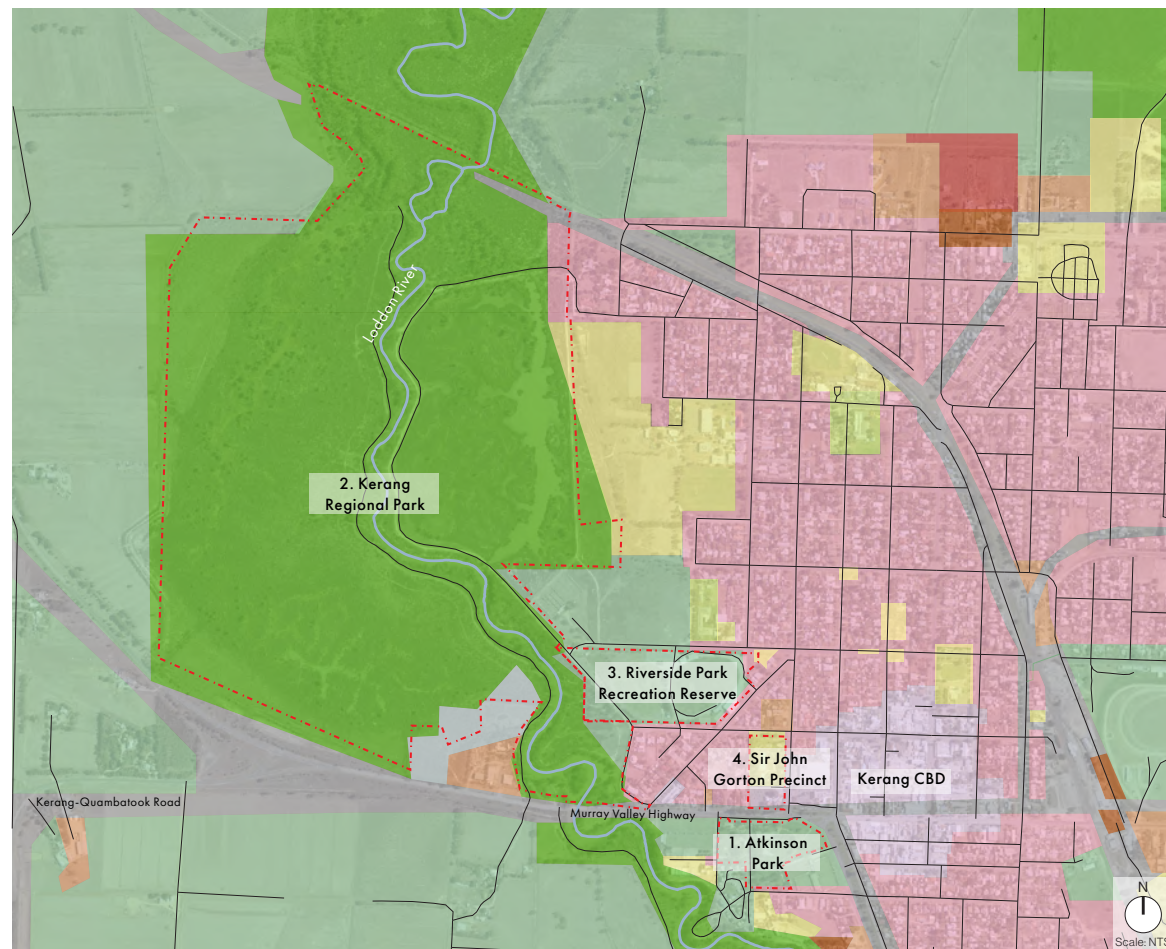


CONTEXT ANALYSIS

Land Use

Within the context of the sites, there are several Land Use and Functions as showed on the side map and below legend.

These will help define and develop the different sites accordingly.

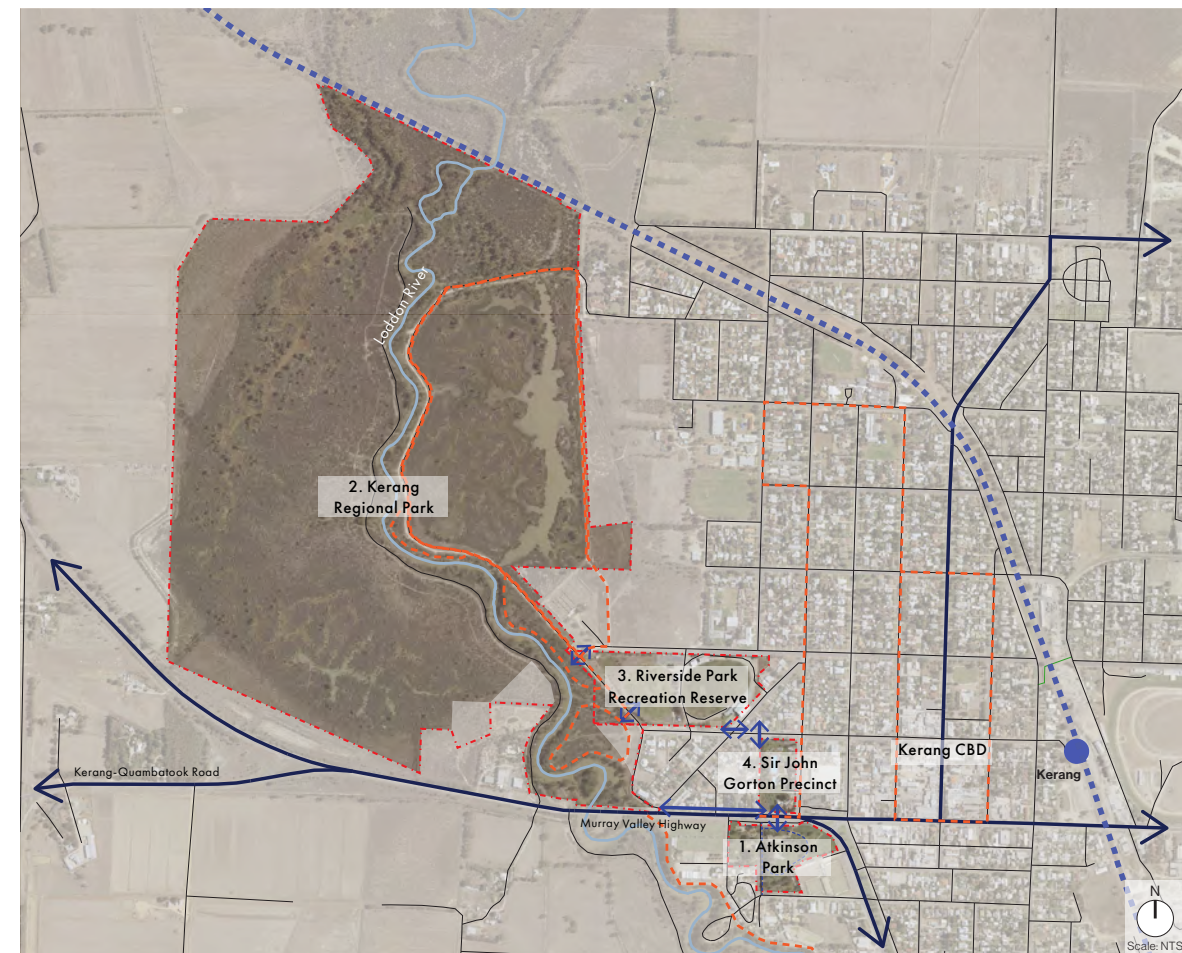


Legend:

- | | |
|--|--|
| ■ Public Conservation and Resource Zone | ■ Low Density Residential Zone |
| ■ Public Park and Recreation Zone | ■ Rural Living Zone |
| ■ Special Use Zone | ■ Industrial Zone |
| ■ Public Use Zone | ■ Mixed Use Zone |
| ■ Farming Zone | ■ Transport Zone |
| ■ General Residential Zone | ■ Commercial 1 Zone |

Access & Movement Corridors

The main road access to the sites is Murray Valley HWY which also works as a regional connector. For each individual site, there are local road accesses and a potential to connect all sites through one corridor.



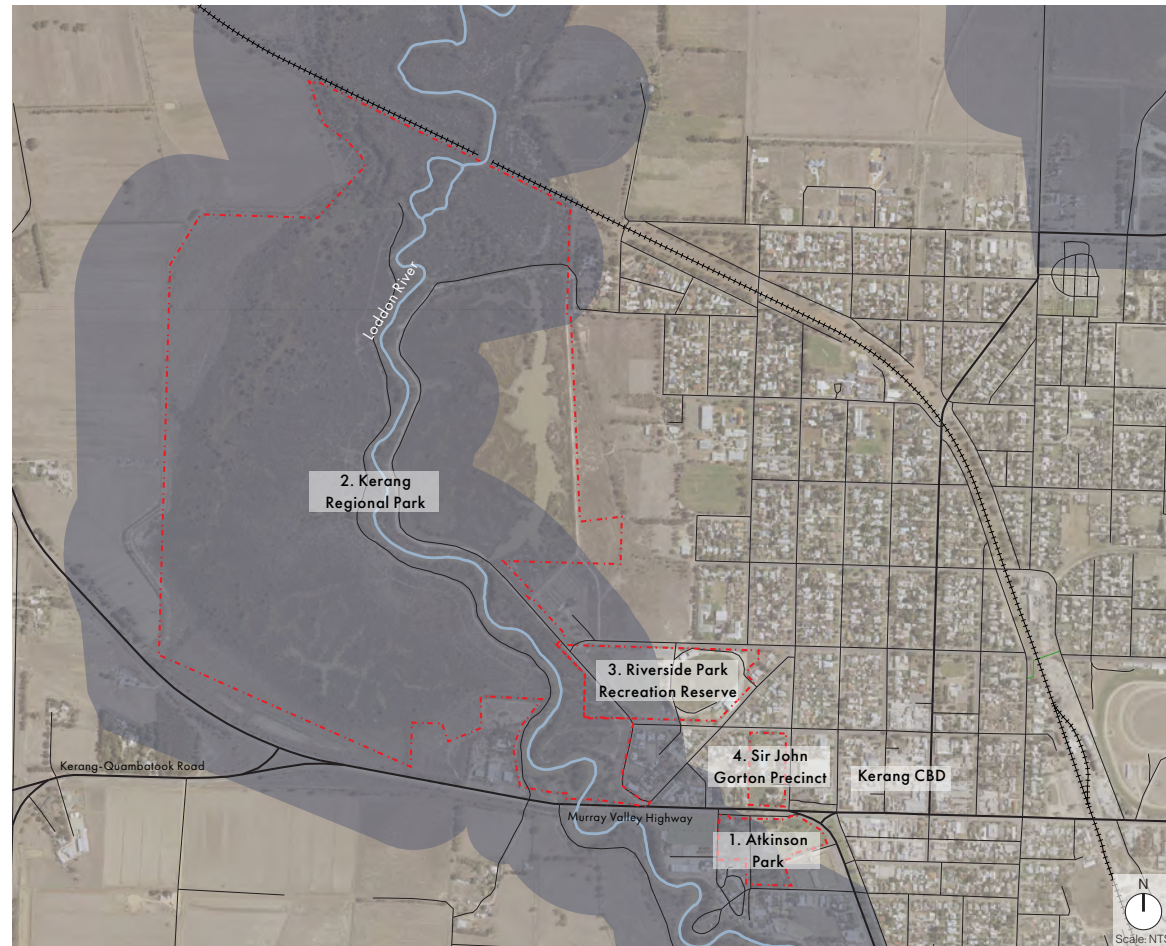
Legend:

- | | |
|---|--|
| ↔ Main road | - - - Cycle friendly roads |
| — Road | - - - Existing trails |
| ↔ Links to adjacent sites | |
| - - - Rail line | |
| ● Train station | |

CONTEXT ANALYSIS

Aboriginal Cultural Sensitivity

Areas that are of Aboriginal Cultural Sensitivity correlate to wetland areas, rivers and streams. This needs to be considered when developing the sites as there are major overlaps, specially through Kerang Regional Park. Therefore, a cultural heritage management plan will need to be developed.

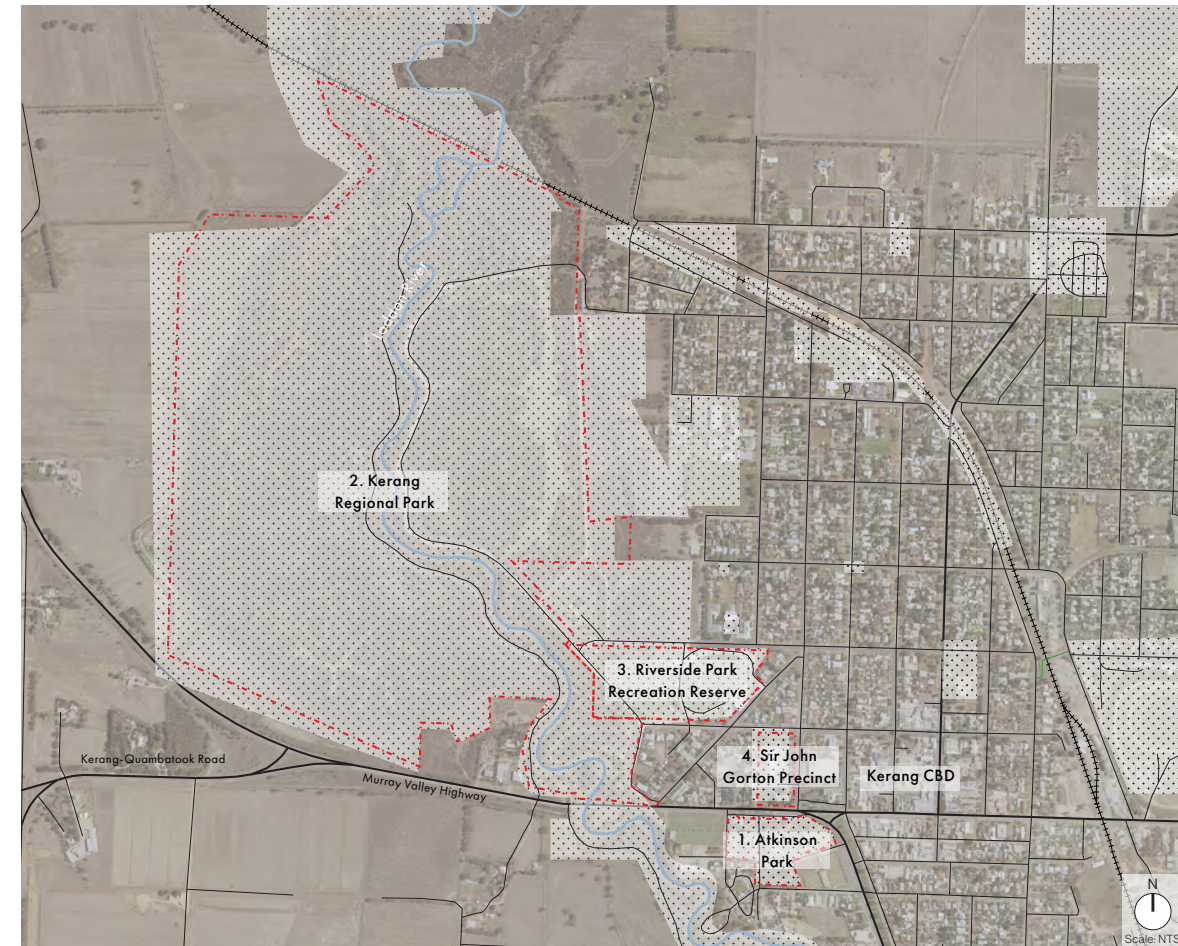


Legend:

Aboriginal Cultural Sensitivity Area

Crown Land

Crown land is land owned by the State or Commonwealth Government. Atkinson Park is the only site in this project that is not Crown Land, which should be given consideration once the masterplan is developed.



Legend:

Crown Land



VISION

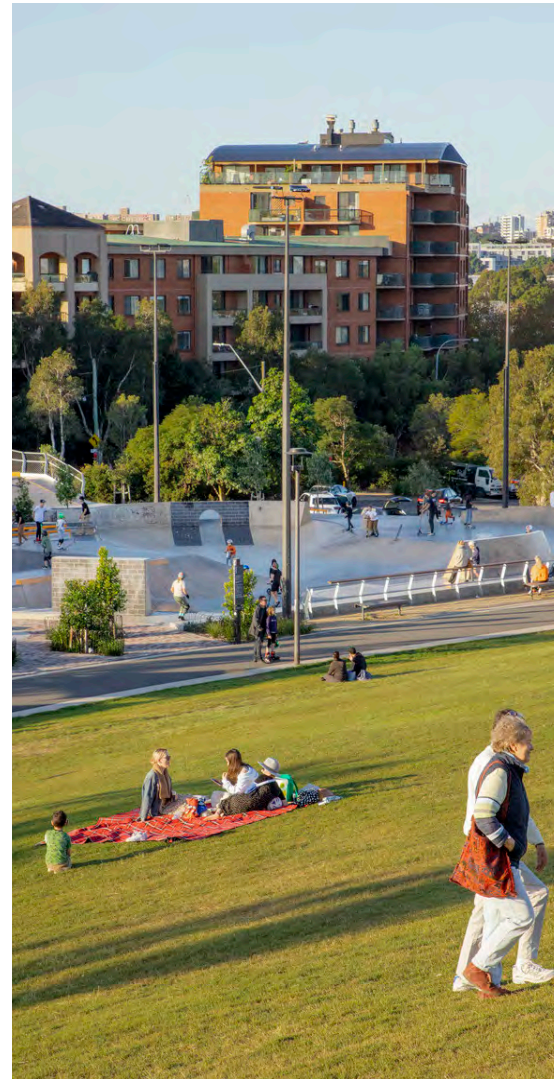
05

VISION



Upgrade facilities

Ensure the facilities are up to standard and valued by the community. Providing multi-use facilities can allow more users to use it and be of more value to the community



Formal and unstructured activities

Encourage participation from the community by providing a range of amenities and facilities that are formal and organised or passive recreation



Accessibility and inclusive amenities and facilities

Ensure facilities are accessible and inclusive to different users. Facilities should cater to different age groups, genders, abilities, and financial capabilities.



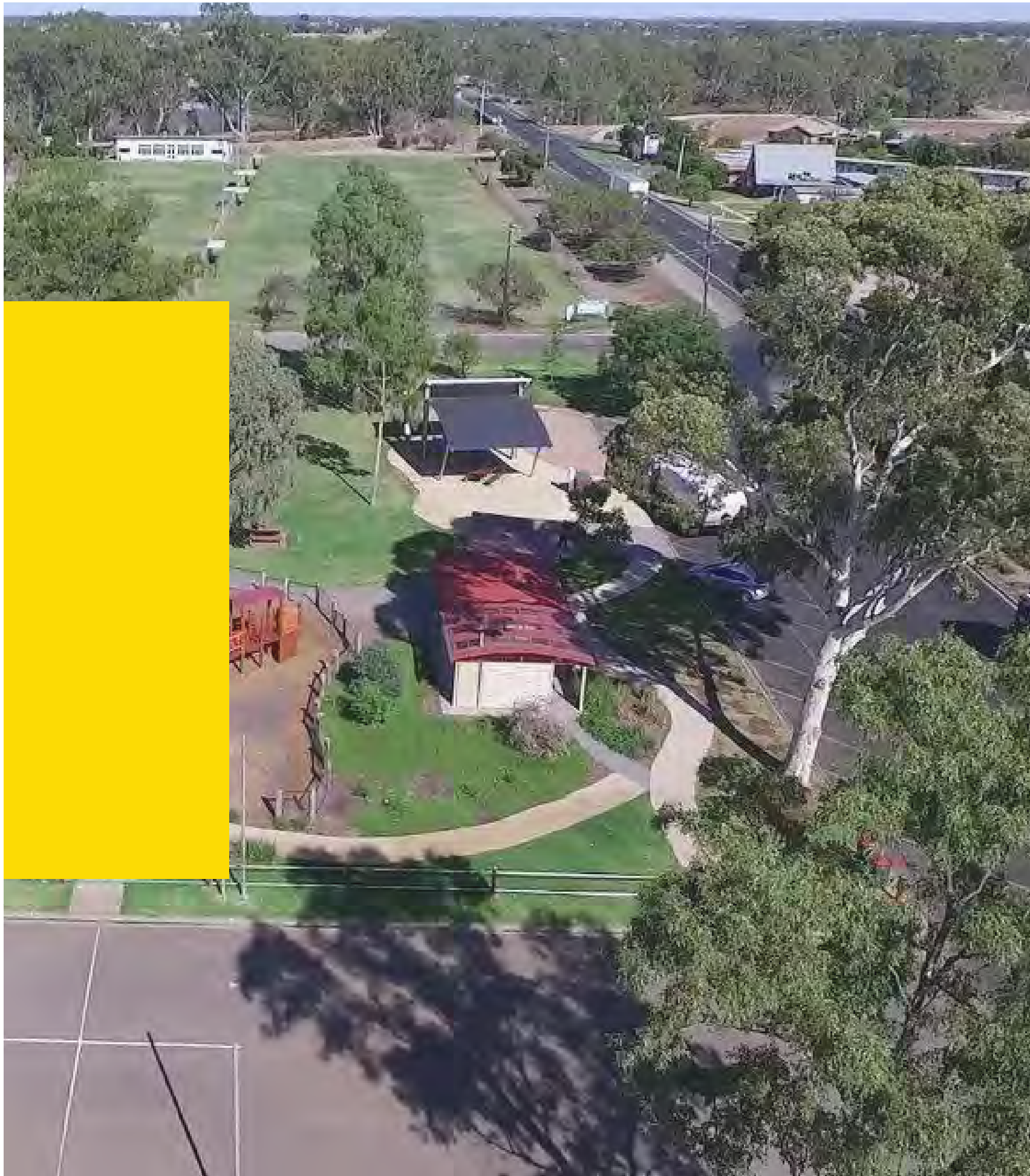
Wayfinding and signage

Improve connectivity within the sites and around Kerang. Provide clear and safe connections within and to the sites. This can encourage more participation.



Environment and sustainability

Protect and enhance the surrounding environment with the parks/reserves and consider the impact infrastructure may have on the environment



ATKINSON PARK

06

ATKINSON PARK SUMMARY

Site Description

Atkinson Park is a very popular local park for the community. The park offers a number of activities as shown in the legend / map that attract multiple age groups and user profiles.

It is a very versatile regional level park and used for local community events including monthly markets and offers a good balance of active and passive recreation opportunities.

An opportunity for clear branding of the site shall be a design consideration.

Strategic Context

Facilities at Atkinson Park are aligned with Goal 1 of the current Council Plan which aims to enhance the wellbeing and liveability of the Gannawarra Shire through creative infrastructure and services.





Some things to consider include a safe and clear pedestrian connection to the CBD, caravan park and Tennis clubs / museum, highlighting the RSL memorial and link the east and west sides of the park.

The Kerang Lawn Tennis Club Business Plan and Council's Synthetic Hockey Feasibility Study should also be considered prior to any changes to tennis facilities at Atkinson Park.

Identified Issues

- Safe and clear accessibility from the CBD;
- Safety issues with synthetic tennis courts
- Underutilised spaces provide development opportunities

Primary Sports and Recreation Uses

-  Outdoor Fitness equipment
-  Tennis
-  Skatepark
-  Walking, Jogging

Active Recreation Facilities

Further development of active recreation infrastructure throughout the open space network in Kerang will deliver more social and physical activity outcomes for the community. Gannawarra Shire must aspire to provide diverse and accessible opportunities for active recreation that contribute to a healthy, active and connected community.

There is a balanced provision of active recreation opportunities in Atkinson Park with walking paths, outdoor fitness equipment, skate park and tennis courts. These activity types cater for different age cohorts and offer activation and programming opportunities whilst complementing the park setting.

Focusing on multipurpose active recreation nodes at key active recreation sites and in local parks and reserves will provide opportunities for more diversity of physical activity and greater engagement across a range of age cohorts. Active recreation facilities are often installed in isolation, such as outdoor fitness equipment pods and basketball half-courts.

The development of multipurpose active recreation nodes that provide a diversity of opportunities should be a primary focus of future facility planning. Co-location of active recreation components such as multipurpose courts, outdoor fitness equipment, circuit paths, climbing components and skateable surfaces creates active recreation destinations that attract participation.

Establishment of active recreation nodes in close proximity to playspaces and sporting infrastructure can further expand opportunities for physical activity across age cohorts.

Facility Assessment

A comparative assessment of existing infrastructure against tennis facility guidelines was undertaken for the tennis club infrastructure located within the Atkinson Park site extents.

The following table indicates where the facilities meets current expectations (green) and where shortfalls (red) exist.

TENNIS SUMMARY	COMPLIANCE (CLUB/RECREATION)	LIGHTING	FENCING	ACCESS ENTRY	CONDITION
GRASS COURTS	Yes	20% of courts lit	Poor	Poor	Moderate
SYNTHETIC COURTS	Yes	100% of courts lit	Moderate	Poor	Very poor

Notes

- + The tennis club's annual Easter Tournament involves more than 1000 people, including 350 competitors
- + The clubrooms have reached end of life with various issues, including worn carpet tiles, and all abilities access
- + The wiring and solar power for additional court lighting has been completed and will save on installation costs
- + Additional protective shade sails are required to provide players and spectators with UV and heat protection
- + Various unformed paths are compounding the accessibility issues to courts and clubrooms

Key Recommendations for Tennis Facilities

- + Replace damaged fencing, convert synthetic courts to hard courts and plan the development of a new tennis pavilion, with improved drainage

Site Audit



Synthetic tennis courts



Fitness equipment



Playground & BBQ area



Regional skatepark

Community Consultation Participants

- + Kerang and District RSL
- + Kerang Community Market
- + Kerang Children's Centre

Note: Refer Appendices 2 and 3 for user matrix and community consultation feedback summary

ATKINSON PARK

Existing Site

Facilities and spaces for consideration:

- ① RSL Memorial
- ② Skate Park
- ③ Walking Tracks
- ④ Tennis Club
- ⑤ Atkinson Park Playground
- ⑥ Fitness Station
- ⑦ Toilet / Changing Places Facility
- ⑧ Kerang Museum
- ⑨ Market / Outdoor function Area
- ⑩ CFA Running Track
- ⑪ Lawn Bowls Club
- ⑫ Stage
- ⑬ Chess Play Area
- ⑭ Shade structure / seating

Legend:

- Site extents
- Road
- Waterway
- Existing trees
- Existing garden beds



OPPORTUNITIES & CONSTRAINTS

Opportunities

- ① Formalise car park at Kerang Museum
- ② Increase permeability across the park. Consider replacing fence along the CFA running track with removable bollards
- ③ Retain existing trees and increase shade trees around park
- ④ Provide additional landscaping
- ⑤ Enhance entrance point to Kerang through statement trees. Consider height of trees due to overhead power lines and sunlight access
- ⑥ Create a connection between Loddon River and Atkinson Park
- ⑦ Support multi-use gathering spaces - picnic areas, sport / active recreation activities,
- ⑧ Improve walking paths - including a circuit path, around the perimeter of the park, connections to the CBD and the caravan park
- ⑨ Highlight the RSL Memorial Park - improve landscaping
- ⑩ Create a connection between the Lawn Bowls club and Atkinson Park
- ⑪ Consider the needs of people with low activity levels. Ensure playground is all-abilities accessible
- ⑫ Potential to upgrade skate park
- ⑬ Opportunity to integrate a half or full basketball court, or a pump track
- ⑭ Opportunity additional protective shade sails to provide patrons with UV and heat protection
- ⑮ Provide safe crossing opportunities across the Murray Valley Highway/Wellington St
- ⑯ Provide additional parking along Riverwood Drive

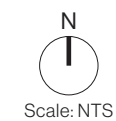


Legend:

- | | | |
|----------------|---------------------------|--|
| Site extents | Existing garden beds | Lake |
| Road | CFA Running Track fencing | Fitness station |
| Waterway | RSL Memorial Area | Playground |
| Existing trees | Shelters | Safe crossing options to be investigated |

Constraints

- A Ageing population needs to be considered - accessible paths are necessary
- B Murray Valley Highway / Wellington Street is high trafficked road - safe crossing options need to be present
- C CFA running track needs to be retained - safety barrier required. Option to have removable / temporary bollards
- D Existing trees should be retained and protected



ATKINSON PARK CONCEPT PLAN

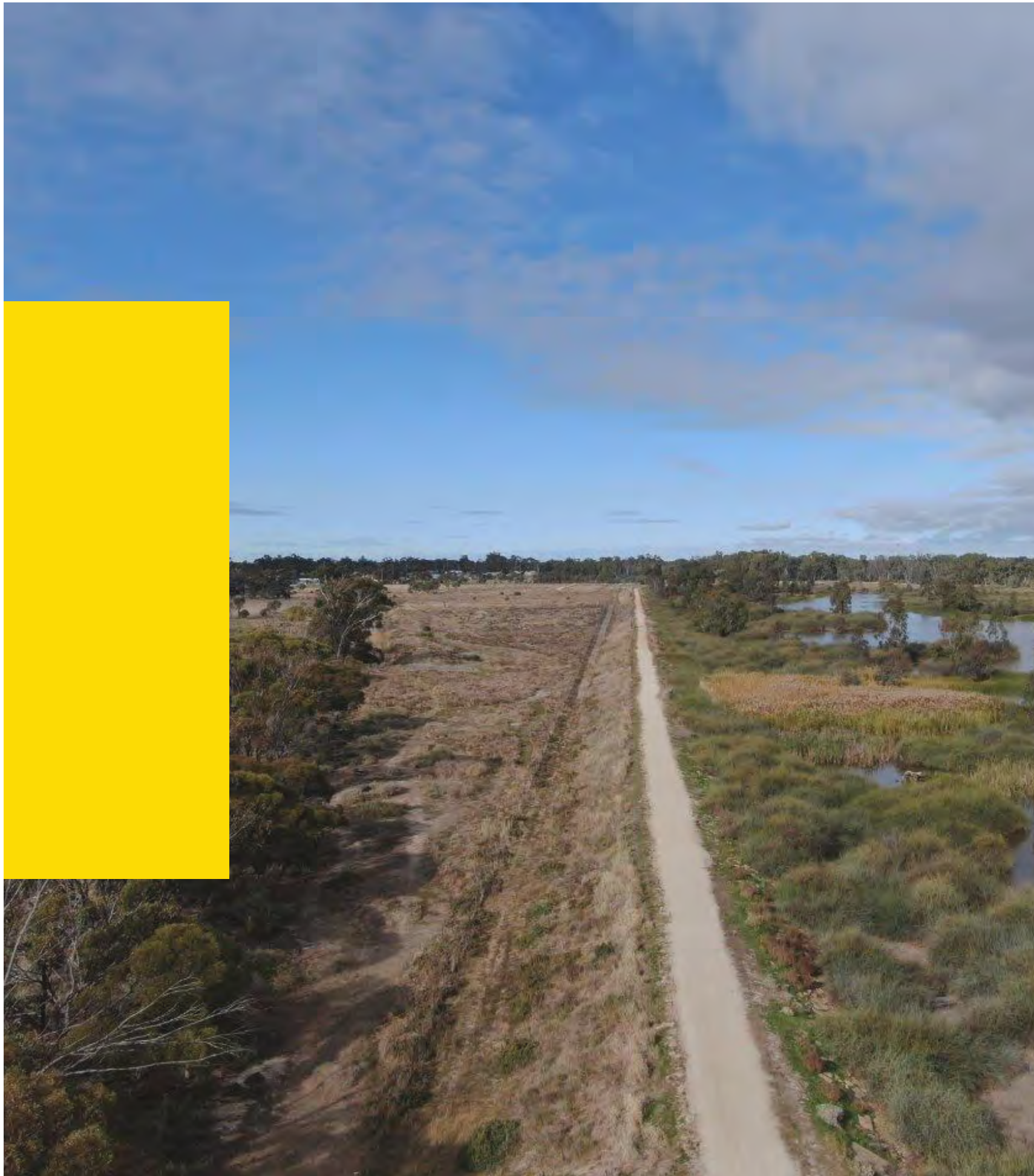


- | | |
|---|---|
| ① Paving and lighting design to be upgraded | ⑫ Potential pedestrian crossing line marking and consider integration of pram ramps |
| ② Main cenotaph at RSL to be refurbished | ⑬ Seating area |
| ③ Half basketball court | ⑭ Entrance signage |
| ④ Additional path network and lighting | ⑮ Building to be retained |
| ⑤ Additional tree planting | ⑯ Playground to be retained |
| ⑥ Proposed garden beds | ⑰ Outdoor gym equipment to be upgraded |
| ⑦ Storage area | ⑱ Skate park to be retained |
| ⑧ Additional parking | ⑲ Garden bed to be retained |
| ⑨ Formalise parking at Kerang Museum | ⑳ Plan the development of a new tennis pavilion. Ensure all ability access. |
| ⑩ Statement trees along Murray Valley Highway | ㉑ Replace synthetic courts to hard courts |
| ⑪ Improve pedestrian crossing connection across Murray Valley Highway | ㉒ Upgrade the tennis facilities including replacing damaged fence, improving lighting and drainage. |

Legend:

Proposed trees	Garden bed
Existing trees	Gravel
Seating area	Proposed concrete
Half court	Existing path
Grass	Proposed lighting

N
Scale: 1:1500



KERANG REGIONAL PARK

07

KERANG REGIONAL PARK SUMMARY

Site Description

The north section of Kerang Regional Park is directly adjacent to the train tracks and is accessible via North Street. In this area the main uses include walking tracks, which are used in the weekly Parkrun, and kayak launching which is quite popular for the community.

The south stretch of Kerang Regional Park is directly adjacent to Riverside Park and Murray Valley Highway, accessible through Wyndham St and the highway. This stretch is very popular for 4-wheel drive tracks and dog walking. Parkrun occurs each Saturday on the east side of the river. There are a number of existing bridges which are in need of upgrading.

Strategic Context





Recognised in the Gannawarra Walking and Cycling Strategy as an important community asset with social, environmental and economic benefits.

Council's role for Kerang Regional Park is as an advocate for improved facilities and to work collaboratively with Parks Victoria, Kerang Landcare and other user groups to support improvement.

Identified Issues

- Lack of toilets and BBQ facilities
- Existing signage not supporting Parkrun operations
- Internal road use causing conflict with Parkrun participants
- Aging park furniture
- Trail subject to flooding

Primary Sports and Recreation uses

-  Running, walking (bush walking & dog walking)
-  Canoeing, kayaking, fishing
-  Cycling, mountain bike riding
-  Bird watching, access to flora and fauna

Site Audit



Trail flooding



Safety issues



Overgrown verge



Park benches & seating

Community Consultation Participants

- + Parkrun members
- + Kerang Landcare
- + Kerang Pistol Club
- + Event organisers
- + Local community
- + Tourists
- + Parks Victoria (TBC)

Note: Refer Appendices 2 and 3 for user matrix and community consultation feedback summary

KERANG REGIONAL PARK

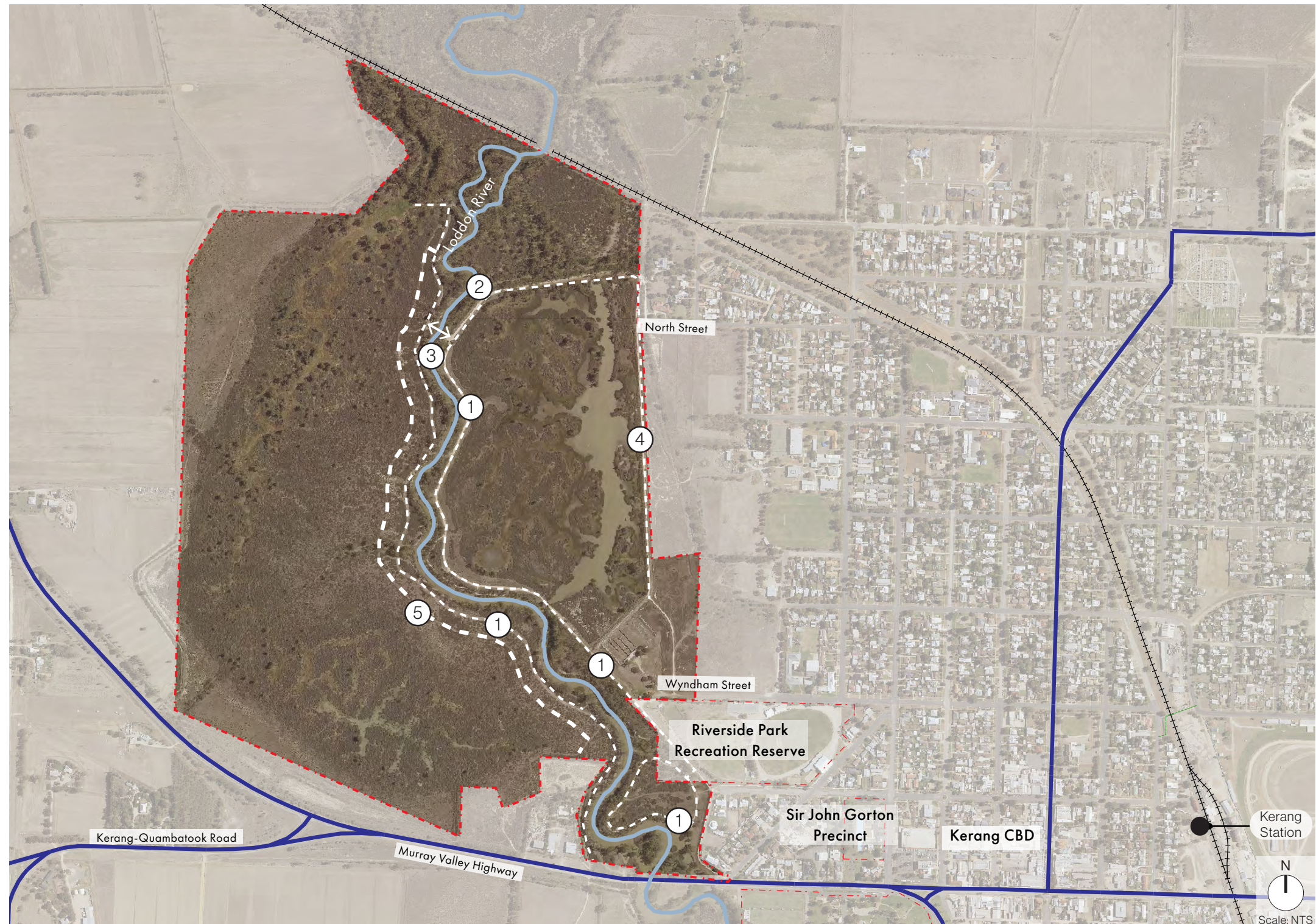
Existing Site

Facilities and spaces for consideration:

- ① Walking Tracks
- ② Kayak Launching area
- ③ Fishing area
- ④ Bird Watching areas
- ⑤ 4WD Track

Legend:

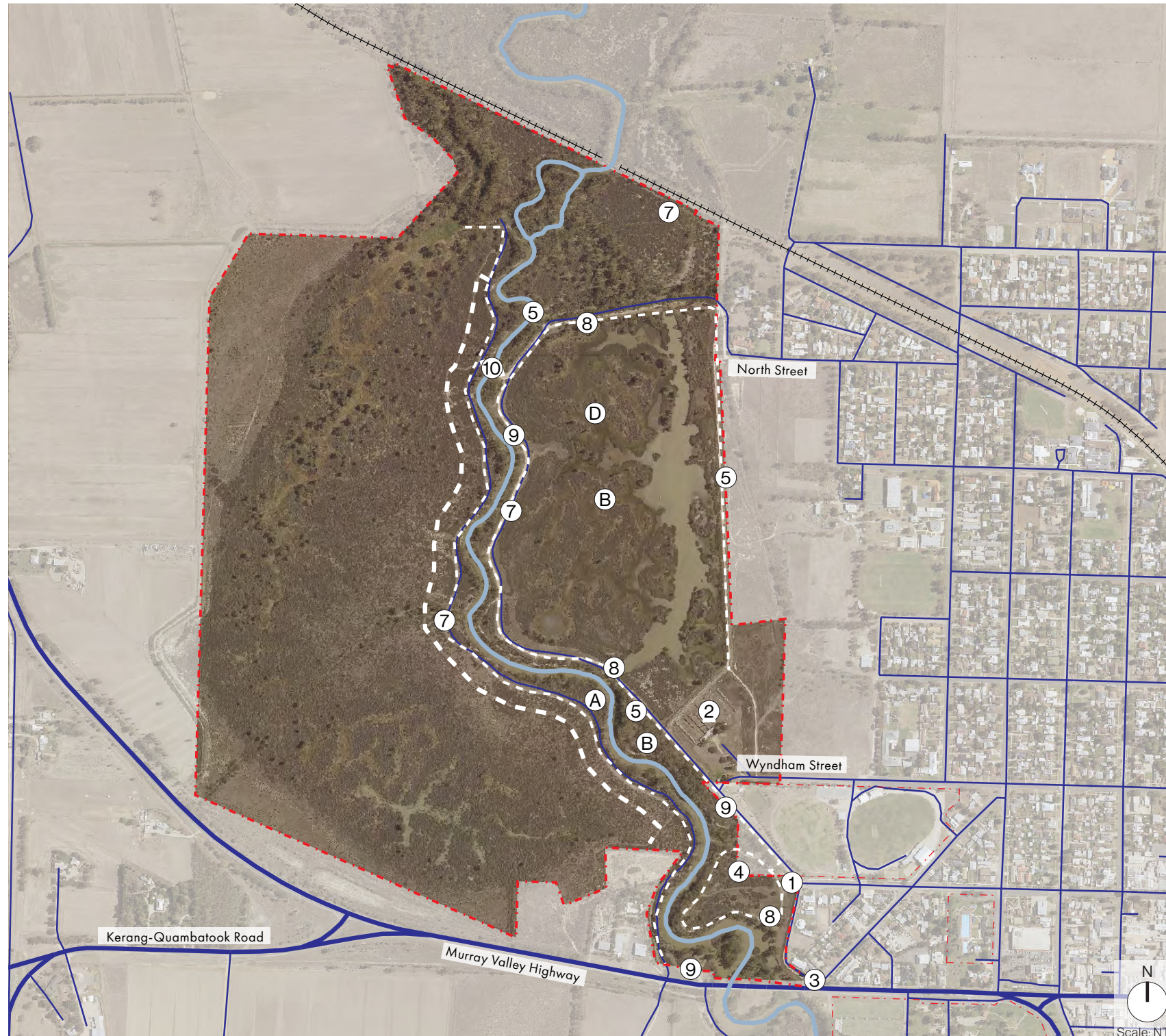
-  Site extents
-  Road
-  Waterway
-  Railway station
-  Walking track
-  4WD track



OPPORTUNITIES & CONSTRAINTS

Opportunities

- ① Trailhead at Wyndham St, with an inclusion of toilet facilities, near entrance of park, with signage and drinking fountain.
- ② Opportunity for a dog park
- ③ Create connection between other sites (Riverside Park, Kerang Swimming Pool and Atkinson Park) through wayfinding and clear path connections
- ④ Utilise a unified material schedule to link to other sites
- ⑤ Provide waterfront facilities, such as kayak launch areas, fishing pontoons, bird hide and look out areas
- ⑥ Improvements to existing site furniture, bike stations, BBQ's, etc.
- ⑦ Improve existing trails for walking, jogging, road cycling and mountain biking, horse riding, canoeing and kayaking
- ⑧ Different types of signage along the trail, including trailhead, waymarking, directional, interpretive and management/warning. Ensure signs are resistant to extreme weather events and vandalism
- ⑨ Additional tree planting and landscaping
- ⑩ Bridge upgrades to be considered as part of the masterplan strategy. Subject to budget and relevant department approvals
- ⑪ Prepare for flooding events to ensure safety
- ⑫ Develop a maintenance plan to ensure trail is not overgrown and unkept
- ⑬ Ensure the canoe/kayak launch is easily accessible



Constraints

- A Ageing population needs to be considered - accessible paths are necessary
- B The site is prone to flooding
- C Potential impact on user experience, if Pistol Club is operating
- D The native vegetation (Lignum) can restrict development proposals

KERANG REGIONAL PARK

Wayfinding Strategy

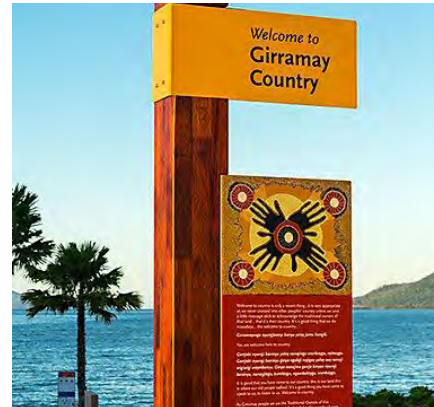
The wayfinding and interpretive signage within Kerang Regional Park will be designed to have a visual relationship with the furniture and gateways so a consistent visual style is achieved.

The wayfinding will be located and specified so as to capture all the key decision points and journeys that people will want to undertake in the area.

The design of the signage system will take its cues from the cultural heritage and river environment. It will include sculptural and graphic elements that communicate history, people and Country.

- + Gateways at the key road entry intersections will act as the Primary Entry Signage and be targeted mainly at vehicles and drivers;
- + Secondary Entry Signage will be located at key positions on pedestrian networks to capture arriving walkers and cyclists. The signs will typically have both mapping, directional messages, local visitor, interpretive or regulatory information;
- + Directional Track Markers will be used along the key path and trail networks with simple directional, regulatory and navigation information;
- + At key locations of significance along the riverfront, interpretive signage panels will be installed to communicate the heritage stories, local history, environmental attributes and Indigenous culture of the river and Kerang; and
- + Signage will also carry information about destinations and locations outside the riverfront precinct where they are directly connected by roads, paths or trails.

An audit of existing signage and interpretive messages will be undertaken in future to assess if the current signs should be removed, modified or integrated into the new sign types and positions.



Welcome to Country Signage



Primary Entry Signage



Secondary Entry Signage



Directional Track Marker



Educational Signage Board

Legend:

- Primary Entry Signage
- Secondary Entry Signage
- ▲ Directional Track Marker
- Educational / Interpretive Signage



KERANG REGIONAL PARK CONCEPT PLAN

- ① Upgrade pontoon / kayak launch to be accessible and compliant
- ② BBQ / Gathering space
- ③ Resting area
- ④ Wayfinding / signage (including directional, interpretive, management/warning). Refer to Wayfinding Strategy page



Legend:

Existing track



CONTINUE TO NEXT PAGE FOR ZOOM IN B

KERANG REGIONAL PARK CONCEPT PLAN

CONTINUE TO PREVIOUS PAGE FOR ZOOM IN A



Key Plan

- ② BBQ / Gathering space
- ③ Resting area
- ④ Wayfinding / signage (including directional, interpretive, management/warning). Refer to Wayfinding Strategy page
- ⑤ Trail head with an inclusion of toilet facilities, signage, drinking fountain, gathering spaces and formalised carparking.
- ⑥ Pistol Club to be relocated to a new location, to be determined between Council and Pistol Club
- ⑦ Dog park
- ⑧ 'Memory Lane' tree planting
- ⑨ Bird hide

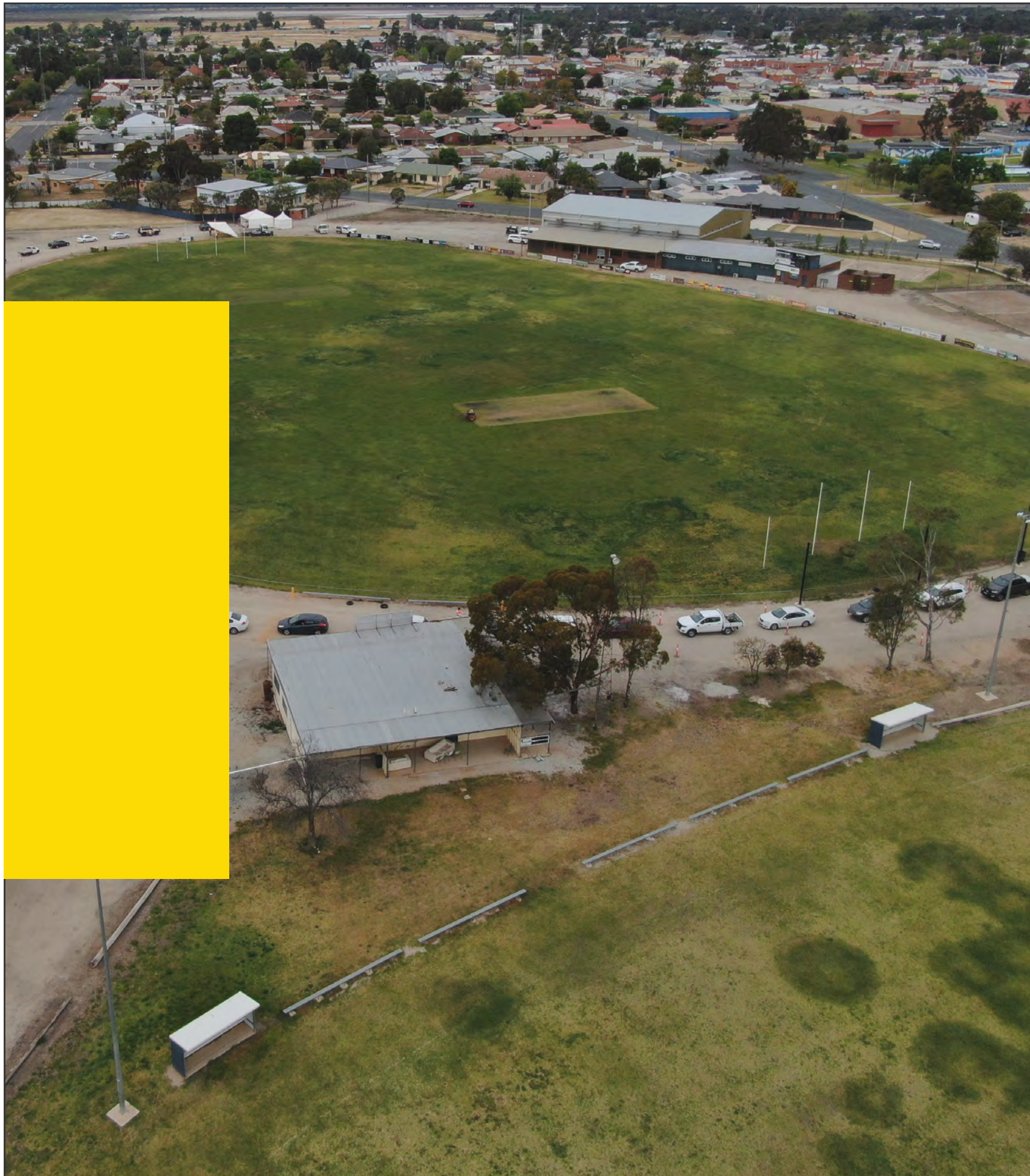
Legend:

— Existing track



Scale: 1:5000





RIVERSIDE PARK RECREATION RESERVE

08

RIVERSIDE PARK RECREATION RESERVE SUMMARY

Site Description

Riverside Park Recreation Reserve located east of Loddon River is home for a range of different sport clubs and includes dual ovals, netball courts, indoor multi-purpose stadium and associated buildings and amenities.

The reserve is home to the local football / netball club, two cricket clubs, a badminton club and a basketball association.

The Recreation Reserve can be accessed via Wyndham Street and Scoreby Street. Sport grounds and other facilities should be upgraded to be compliant.

Strategic Context




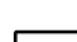

A 2012 Masterplan identified several infrastructure priorities for Riverside Park including sports field lighting, spectator amenity and indoor stadium upgrades.

Council's role for Kerang Regional Park is as an advocate for improved facilities and to work collaboratively with Parks Victoria, Kerang Landcare and other user groups to support improvement.

Identified Issues

- Ageing non-compliant infrastructure with functional issues;
- Vehicle circulation and pedestrian movement;
- Redundant assets (junior change rooms / netball court)

Primary Sports and Recreation Uses

-  Australian Rules Football
-  Cricket
-  Netball
-  Basketball
-  Badminton

Facility Assessment

A comparative assessment of existing infrastructure against AFL facility guidelines was undertaken for Riverside Park infrastructure.

The following tables show where the facilities meet current expectations (green) and where shortfalls (red) exist.

BUILDINGS SUMMARY	ROOM SIZE	AMENITIES	SHOWER TYPE	FEMALE FRIENDLY	ACCESSIBLE ENTRY	CONDITION
HOME CHANGE ROOMS	Less than 45m2	Less than 24m2	Open	No	Yes	Moderate
AWAY CHANGE ROOM (MODULAR)	Less than 45m2	Less than 24m2	Lockable cubicles	Yes	Yes	Excellent
UMPIRES ROOM	Less than 20m2	1 shower, 1 toilet	Lockable cubicles	Yes	Yes	Very poor
SOCIAL ROOM	150m2 - 199m2	No separate office	N/A	Yes	Yes	Moderate

Other Issues / Observations

- + No dedicated timekeeper room, internal storage, external storage and cleaners store provided in the main pavilion
- + Kitchen / kiosk area is below minimum dimensions (less than 20m2)

Key Facility Gaps & Recommendations

- + Refurbish and enhance home and away football change rooms and umpires room amenities to comply with AFL guidelines

FIELD OF PLAY	LENGTH	WIDTH	IRRIGATION	DRAINAGE	LIGHTING LEVELS	CONDITION
OVAL 1 (EAST)	160m - 164m	116m - 125m	Operational but needs upgrading	Operational but needs upgrading	Less than 50 lux	Moderate
OVAL 2 (WEST)	140m - 144m	116m - 125m	Operational but needs upgrading	Operational but needs upgrading	100m - 149m lux	Good
NETBALL	Compliant court dimension and run off incorrect orientation		N/A	Functional	Yes (training only)	Good
INDOOR COURT	Non compliant run off area when 2 courts used simultaneously		N/A	Yes	Yes	Good

Other Issues / Observations

- + Dual turf cricket pitches provided on Oval 1. Unable to play concurrent matches due to fields not meeting minimum dimension and overlapping boundaries
- + The location of the indoor stadium close to Oval 1 prevents 360 degree vehicle movement
- + Oval 2 has no direct access to change rooms for junior matches
- + Lack of covered spectator shelters for netball
- + Indoor stadium change rooms and amenities not female friendly

Key Facility Gaps & Recommendations

- + Improve lighting on Oval 1 east and provide a minimum of 150 lux for training and community competition in accordance with AFL guidelines
- + Re-design and ensure indoor stadium courts are compliant

RIVERSIDE PARK RECREATION RESERVE SUMMARY

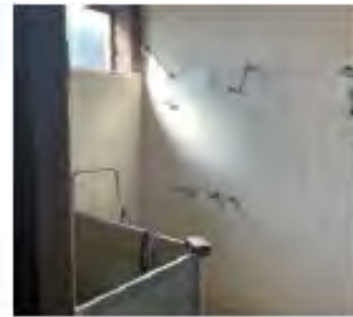
Site Audit



Condemned change rooms



Redundant netball court



Open showers in change rooms



Aging indoor stadium with non-compliant courts

Community Consultation Participants

- + Riverside Park Committee of Management (incl representatives from Football, Netball, Cricket, Badminton and Basketball)

Note: Refer Appendices 2 and 3 for user matrix and community consultation feedback summary






RIVERSIDE PARK RECREATION RESERVE

Existing Site

Facilities and spaces for consideration:

- ① Ovals (Practice, Senior and Junior)
- ② Netball Courts
- ③ Indoor Stadium
- ④ Cricket Nets
- ⑤ Football / Netball Clubrooms
- ⑥ Amenities Building

Legend:

-  Site extents
-  Road
-  Senior/junior oval
-  Practice oval
-  Existing trees













OPPORTUNITIES & CONSTRAINTS

Opportunities

- ① Provide additional shade trees and landscaping around the park
- ② Consolidate eastern oval area to remove existing conflicts with overlapping zones
- ③ Remove old and disused infrastructure
- ④ Potential for additional car park around the indoor stadium
- ⑤ Improve vehicle circulation and pedestrian movement, including wayfinding to the river and to Kerang CBD
- ⑥ Upgrade lighting around the activity areas. Potential to relocate existing training lights from senior sports oval to the junior sports ground, and install new lights on the senior sports ground. Refer to Inside Edge report
- ⑦ Increase seating around playing areas for spectators. Sheltered space is preferred
- ⑧ Upgrade change room and club room facilities
- ⑨ Change room upgrade for second oval, netball and umpires. Ensure female inclusivity
- ⑩ Upgrade shelters, storage shed and fencing near netball courts
- ⑪ Investigate storm water harvesting and drainage reuse scheme to sustain the ovals. Subject to further discussions
- ⑫ Upgrade fence around the dam to ensure public safety
- ⑬ Upgrade indoor stadium, including entrance, courts, change rooms, kitchen and multifunction room. Potential to relocate stadium.
- ⑭ Upgrade steel rail fence around the ovals
- ⑮ Upgrade cricket shed and toilets



Legend:

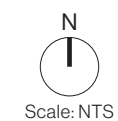
- | | | |
|---|--|--|
|  Site extents |  Proposed/upgraded courts |  Safe crossing options to be investigated |
|  Road |  Proposed formalised parking |  Indicative opportunity area for additional future activities |
|  Existing trees |  Dam Fencing | |
|  Potential new trees |  Buildings to be renovated / upgraded | |

Opportunities

- ⑯ Upgrade the court outside the stadium. Provide a multi use court space.
- ⑰ Provide a playground area for children
- ⑱ Demolish and build new indoor stadium to include two full sized courts. Opportunity to provide new activities such as futsal, indoor hockey, etc.
- ⑲ Investigate options of relocating the indoor stadium
- ⑳ Inclusion of an electronic scoreboard
- ㉑ Pedestrian lighting - consider solar and sensor lighting options

Constraints

- A Ageing population needs to be considered - accessible paths are necessary
- B Existing trees should be retained and protected
- C Road in-between the two sports ovals causes a safety issue for pedestrians - investigate safe pedestrian flow to determine paths required.
- D Extreme weather conditions, dry summers and potential for flooding. Landscape treatments to consider the different climatic conditions.
- E Council are not the landowner, therefore limited in ability to support investment at the reserve



RIVERSIDE PARK CONCEPT PLAN - STAGE 1



① New indoor sports stadium including two full regulation sized basketball courts with potential to incorporate 10 badminton courts (subject to further investigation), change rooms, umpire facilities, reception, office space, kitchen/ cafe, foyer, storage and first aid room. Total area: 3160m² including 1880m² of sport courts.

- ② Stadium entry / plaza zone
- ③ Stadium drop-off zone
- ④ Consolidate ovals on the Eastern side
- ⑤ Re-align and re-size ovals. Oval 1 (East) dimensions to be 130m x 160m. Oval 2 (West) dimensions to be 115m x 140m.
- ⑥ Upgrade / provide sports lighting
- ⑦ Upgrade fencing around the ovals
- ⑧ Formalised / additional parking
- ⑨ Gathering space
- ⑩ Amenities building - including inclusive/DDA toilets and change rooms, umpire room and storage area.

- ⑪ Proposed fitness area
- ⑫ Entry points
- ⑬ Re-align internal roads. Design subject to further traffic engineers advice
- ⑭ Proposed scoreboard location
- ⑮ Pedestrian lighting
- ⑯ Overflow car park
- ⑰ Where stadium upgrade is not feasible, invest in development of clubroom amenities to incorporate features such as dedicated timekeeper room, internal/ external storage, cleaners storage, upgraded kitchen/kiosk area
- ⑱ Ticket box to be retained

RIVERSIDE PARK CONCEPT PLAN - STAGE 2





SIR JOHN GORTON LIBRARY

09

SIR JOHN GORTON LIBRARY

Existing Site

Facilities and spaces for consideration:

- (A) Sir John Gorton Library ('future library expansion project 'The Glasshouse' approved and intended to commence 2024)
- (B) Kerang Outdoor Swimming Pool
 - + Main pool
 - + Intermediate pool
 - + Splash park
 - + Water slide
 - + Amenities and change rooms
 - + Swimming Club room
 - + Kiosk/Office/Reception area
 - + Shade structures and picnic areas

Legend:

-  Site extents
-  Road
-  Existing trees



SIR JOHN GORTON LIBRARY SUMMARY

Site Description

Sir John Gorton Library and Kerang Outdoor Swimming Pool sit within the Sir John Gorton Precinct.

The outdoor seasonal pool is owned and managed by Council and has a 50m pool, intermediate pool, splash park, waterslide, change rooms, amenities, kiosk, shade and picnic area.

The library has been approved funding for future expansion, with The Glasshouse project intended to commence in 2024.

The precinct can be accessed through Shadforth Street, via Wellington Street and Scoresby Street.

Primary Sports and Recreation uses



Recreational swimming



Club swim events



Swim lessons



Water play

Strategic Context

The Gannawarra Shire Aquatic Strategy adopted in 2023, recommends the re-development of the Kerang Outdoor Pool and delivery of a sub-regional indoor aquatic facility. This includes a new entry with the library, indoor pool, warm water pool, change rooms, dry health and fitness facilities and allied health services.

Identified Issues

- The main outdoor pool is reported to be past end of life;
- Technical audit identified several maintenance issues;

Site Audit



Outdoor pool entrance



Shade structure over water play area



Connection to Kerang library

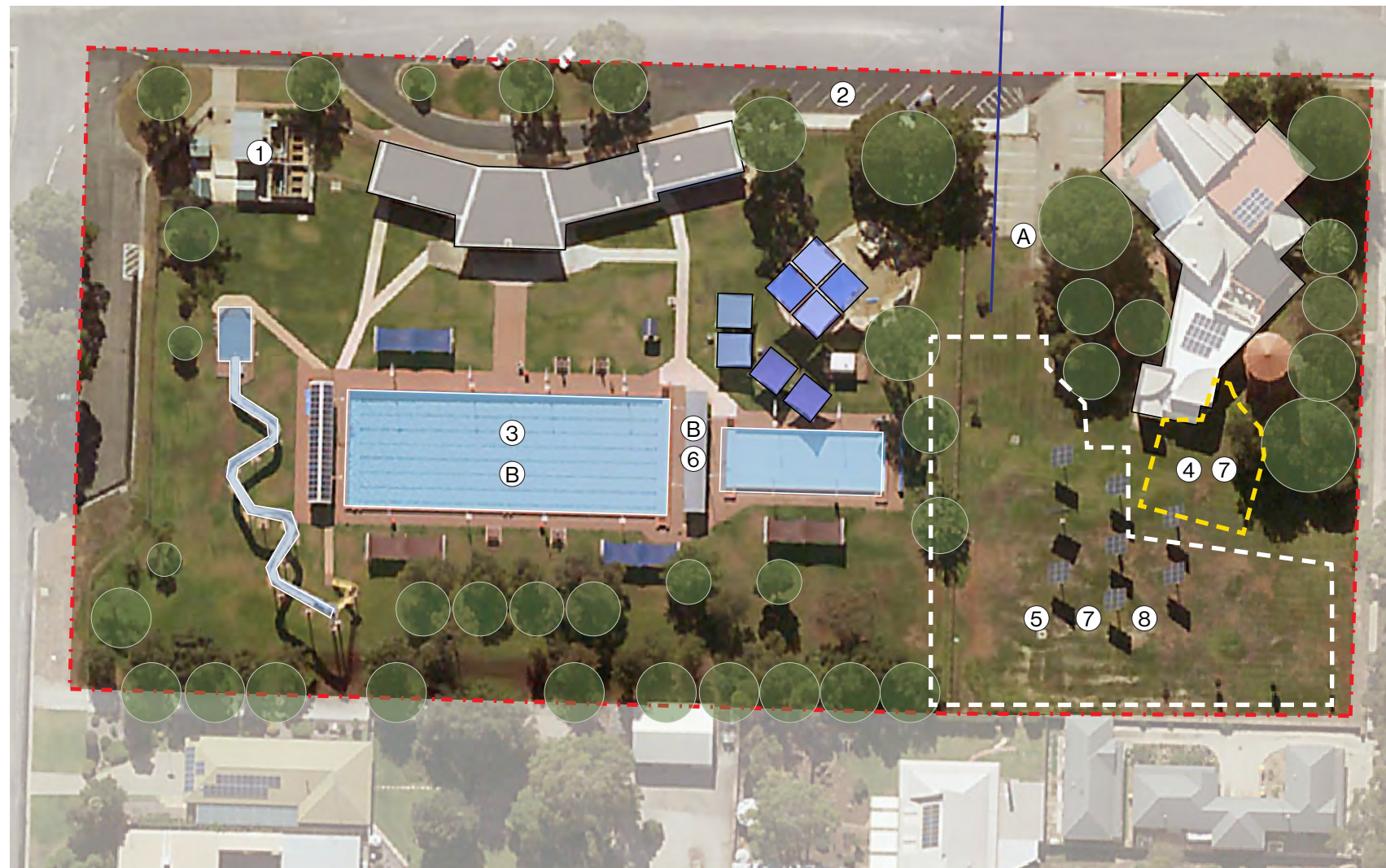


Ageing plant room

OPPORTUNITIES & CONSTRAINTS

Opportunities

- ① Upgrade plant
- ② Upgrade parking options to include provision for long vehicle parking
- ③ Wet deck conversion and all abilities ramp into 50m pool
- ④ The Glasshouse library development
- ⑤ Potential location for new pool as identified in the Gannawarra Aquatics Strategy
- ⑥ Undertake the necessary maintenance works as identified within the technical audit
- ⑦ Develop concept plans and capital cost estimate for an integrated aquatic centre and The Glasshouse project
- ⑧ Prepare a business case for the integrated aquatic centre to understand the operational costs, usage and Council subsidy

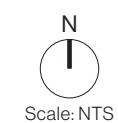


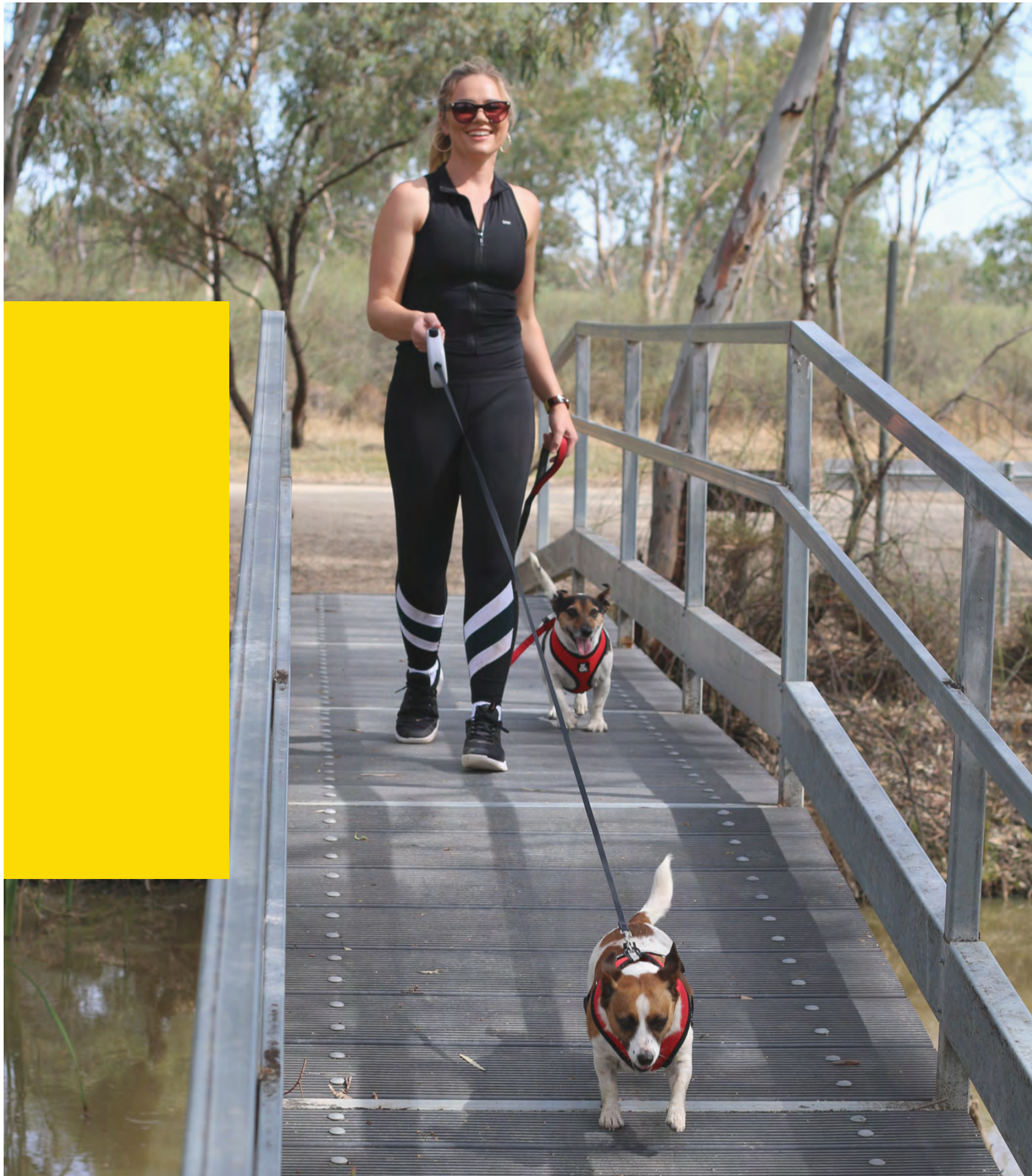
Constraints

- Ⓐ Aging population needs to be considered - accessibility is necessary
- Ⓑ Ensure long-term maintenance

Legend:

- | | |
|---|--|
|  Site extents |  Glasshouse Proposal |
|  Road |  Existing pool |
|  Existing trees |  Existing change building |
|  Potential new trees | |





APPENDICES

APPENDIX 1

STRATEGIC DOCUMENT SUMMARY

STRATEGIC DOCUMENTS SUMMARY

OBJECTIVES/THEMES	ACTION	STRATEGIC DOCUMENT	NOTES	OBJECTIVES/THEMES	ACTION	STRATEGIC DOCUMENT	NOTES
ACTIVATION/ IMPROVEMENTS OF FACILITIES	INVEST IN MULTI-PURPOSE FACILITIES THAT SUPPORT WIDER USE OF FORMAL SPORT AND RECREATION FACILITIES	GANNAWARRA SHIRE COUNCIL SPORTS AND RECREATION STRATEGY 2019-2029			ENSURE THAT ACTIVE RECREATION FACILITIES ARE EASY TO GET TO, THROUGH CLEAR PEDESTRIAN CONNECTIONS AND AMPLE VEHICLE AND BIKE PARKING		
	DEVELOPMENT OF MULTI-USE FACILITIES AND SPACES WHICH CAN CATER FOR A VARIETY OF ACTIVITIES	RIVERSIDE PARK SPORTS RESERVE MASTERPLAN 2012-2021		DEVELOP OR ENSURE FACILITIES/ INFRASTRUCTURE ARE COMPLIANT	ENSURE THE QUALITY PATHS AND TRAILS ARE MAINTAINED		WALKING AND JOGGING/ RUNNING ARE THE TOP RECREATIONAL ACTIVITIES IN THE SHIRE
	PROVIDE STORAGE SHEDS / AREAS. E.G. STORAGE SHED NEXT TO CRICKET NETS AT RIVERSIDE PARK AND STORAGE NEAR THE NETBALL COURTS.	RIVERSIDE PARK SPORTS RESERVE MASTERPLAN 2012-2021			UPGRADE EQUIPMENT IN ATKINSON PARK, DUE TO IT BEING AGED AND OUTDATED.	GANNAWARRA SHIRE COUNCIL SPORTS AND RECREATION STRATEGY 2019-2029	
PROVIDE A FACILITY FOR THE NETBALL CLUB AT RIVERSIDE PARK	RIVERSIDE PARK SPORTS RESERVE MASTERPLAN 2012-2021	INCLUDING A BASIC KITCHENETTE, CHANGE ROOMS FOR NETBALL AND FOOTBALL, AN OFFICE SPACE AND STORAGE AREA		UPGRADE SPORTS GROUND LIGHTING TO MATCH STANDARD	GANNAWARRA SHIRE COUNCIL SPORTS AND RECREATION STRATEGY 2019-2029		
INCREASED PARTICIPATION	SUPPORT MULTI-USE SOCIAL GATHERING SPACES	COUNCIL PLAN 2017-2021		RESURFACING SPORT GROUND FACILITIES			
	INSTALLATION OF A SYNTHETIC RECTANGULAR FIELD FOR HOCKEY	SYNTHETIC HOCKEY FEASIBILITY STUDY 2009	PROVIDES AN OPPORTUNITY FOR THE GROWTH AND DEVELOPMENT OF LOCAL HOCKEY CLUBS/ ASSOCIATIONS; MAY DRAW OLDER PEOPLE TO COME BACK TO A SOCIAL VETERANS COMPETITION, AND ENCOURAGE YOUNG PEOPLE TO JOIN. THE RECTANGULAR SPORTS FIELD ALSO ALLOWS SOCCER/FUTSAL TO BE PLAYED, AND BE A BACK UP FOR NETBALL/AFL IN FLOODING/DROUGHT EVENTS	DEVELOP A PAVILION FOR THE NETBALL/ FOOTBALL CLUBS AT RIVERSIDE PARK RECREATION RESERVE	GANNAWARRA SHIRE COUNCIL SPORTS AND RECREATION STRATEGY 2019-2029		
	ENSURE THAT ACTIVE RECREATION FACILITIES ARE EASY TO GET TO, THROUGH CLEAR PEDESTRIAN CONNECTIONS AND AMPLE VEHICLE AND BIKE PARKING			CONSIDER REPLACING KERANG EXERCISE POOL TO A CONTEMPORARY WARM WATER PROGRAM POOL, WITH DISABILITY ACCESS AND AN INCREASE IN SIZE	GANNAWARRA AQUATIC STRATEGY 2021		
DEVELOP PLAY SPACES WITH LANDSCAPING AND PICNIC FACILITIES TO ENCOURAGE FAMILY USE OF FACILITIES	RIVERSIDE PARK SPORTS RESERVE MASTERPLAN 2012-2021			PROVIDE/UPGRADE AMENITIES SUCH AS TOILET BLOCKS, SEATING AREAS AND STORAGE AREAS			
IMPROVING HEALTH AND WELLBEING OF COMMUNITY MEMBERS	INSTALLATION OF COMMUNITY GYMS OR PARK/ OUTDOOR SPACES WITH EXERCISE EQUIPMENT	CHILDREN AND YOUTH STRATEGY 2016-2020	CHILDREN AND YOUTH, AGED 9-18, UTILISE COMMUNITY GYMS OR OUTDOOR SPACES WITH EXERCISE EQUIPMENT	UPGRADE RAIL FENCE AROUND THE SENIOR SPORTS OVAL AT THE RIVERSIDE PARK	RIVERSIDE PARK SPORTS RESERVE MASTERPLAN 2012-2021		
	ENCOURAGE PARTICIPATION FROM ALL USERS / AGE GROUPS BY PROVIDING SPACES THAT ARE FLEXIBLE FOR DIFFERENT USERS			USING ENERGY SAVING INITIATIVES - PARTICULARLY WATER, SHADE AND SOLAR	RIVERSIDE PARK SPORTS RESERVE MASTERPLAN 2012-2021		
				DECREASE THE IMPACT ON THE ENVIRONMENT THROUGH THINGS SUCH AS WATER SAVING DEVICES, UTILISING DOUBLE GLAZING ON WINDOWS, ETC.	RIVERSIDE PARK SPORTS RESERVE MASTERPLAN 2012-2021		
				POTENTIAL TO PLANT DROUGHT TOLERANT GRASSES IN OVALS.	RIVERSIDE PARK SPORTS RESERVE MASTERPLAN 2012-2021		
				INSTALL SOLAR PANELS ON THE INDOOR STADIUM AND PAVILIONS	RIVERSIDE PARK SPORTS RESERVE MASTERPLAN 2012-2021		
				INTRODUCE WATER SENSITIVE URBAN DESIGN INTO THE PLANNING PROCESS TO ENSURE NEW DEVELOPMENTS DO NOT COMPROMISE WATER QUALITY OR DETERIORATE WETLANDS IN THE SHIRE	GANNAWARRA ENVIRONMENTAL SUSTAINABILITY STRATEGY 2013-2016		

STRATEGIC DOCUMENTS SUMMARY

OBJECTIVES/THEMES	ACTION	STRATEGIC DOCUMENT	NOTES	OBJECTIVES/THEMES	ACTION	STRATEGIC DOCUMENT	NOTES
IMPROVED SAFETY AND SECURITY (CPTED)	UPGRADING LIGHTING ALONG PATHS AND SPORT GROUNDS. CONSIDER THE TYPE OF LIGHTING FOR DIFFERENT SETTINGS, I.E. ALONG THE WATERFRONT VS AT SPORT GROUNDS.	GANNAWARRA SHIRE COUNCIL SPORTS AND RECREATION STRATEGY 2019-2029	TO ENCOURAGE PARTICIPATION AND INCREASES PERCEPTION OF SAFETY		PREVENT THE EFFECTS OF EXTREME HEAT EVENTS BY PROVIDING SHADE IN PUBLIC SPACES AND ACCESS TO DRINKING WATER	GANNAWARRA HEAT HEALTH MANAGEMENT PLAN 2017	
	ENSURE SAFE AND ACCESSIBLE CONNECTIONS TO PLACES WHERE PEOPLE SPEND THEIR TIME, INCLUDING SCHOOLS, WORKPLACES, SPORTING CLUBS, PARKS AND SHOPPING PRECINCTS.	WALKING AND CYCLING STRATEGY 2022		MAINTENANCE AND MANAGEMENT	IMPROVE FACILITIES SUCH AS TOILETS AT PLAYGROUNDS, ROAD CROSSINGS AND FOOTPATHS.	EARLY YEARS PLAN	
	IMPROVE VEHICLE AND PEDESTRIAN MOVEMENTS THROUGHOUT THE RESERVE AND ADJOINING ROADS	RIVERSIDE PARK SPORTS RESERVE MASTERPLAN 2012-2021			ONGOING MAINTENANCE AND IMPROVEMENTS TO EXISTING ASSETS TO TAKE FULL ADVANTAGE OF USAGE	GANNAWARRA SHIRE COUNCIL SPORTS AND RECREATION STRATEGY 2019-2029	
WAYFINDING AND SIGNAGE	UPGRADING SIGNAGE TO THE TRAILS AND ALONG THE TRAILS SHOULD BE CONSIDERED	TRACKS AND TRAILS STRATEGY PLAN 2005			DEVELOP A FRAMEWORK TO GUIDE COUNCIL DECISION MAKING AND SUPPORT COMMUNITY ACCESS TO SPORT AND RECREATION FUNDING OPPORTUNITIES	GANNAWARRA SHIRE COUNCIL PLAN 2021-2025	
	CONNECT A RANGE OF SPORT AND RECREATIONAL FACILITIES THROUGH WAYFINDING AND CLEAR PATH CONNECTIONS			LANDSCAPING, RESTORATION AND/OR REVEGETATION	IMPROVE THE BUILT ENVIRONMENT AND SUPPORT THE NATURAL ENVIRONMENT	GANNAWARRA WATERFRONT MASTERPLANS 2019	
	HISTORICAL SIGNIFICANCE TO THE REGION AND OFFERS A NUMBER OF OPPORTUNITIES FOR INTERPRETIVE INFORMATION	"KERANG-KOONDROOK RAIL TRAIL FEASIBILITY STUDY 2014			DEVELOPMENTS OF TRAILS, WITH THE HELP OF LOCAL LANDCARE GROUPS, CAN PROVIDE THE OPPORTUNITY FOR REVEGETATION AND CONSERVATION OF LOCAL FLORA AND FAUNA	GANNAWARRA WALKING AND CYCLING STRATEGY 2022	
	USE OF SIGNAGE AT THE ENTRANCES OF FACILITIES TO INFORM PATRONS OF THE ACTIVITIES AVAILABLE	RIVERSIDE PARK SPORTS RESERVE MASTERPLAN 2012-2021			DEVELOP A MORE FORMAL ENTRANCE TO RIVERSIDE PARK WITH THE USE OF LOW MAINTENANCE PLANTINGS, AND IMPROVE THE LANDSCAPED GARDENS IN FRONT OF THE STADIUM	RIVERSIDE PARK SPORTS RESERVE MASTERPLAN 2012-2021	
	INSTALLATION OF DIRECTIONAL AND INTERPRETIVE SIGNAGE TO ASSIST IN VEHICLE AND PEDESTRIAN MOVEMENT AND TO CREATE A SENSE OF ARRIVAL	RIVERSIDE PARK DEVELOPMENT PLAN 2003			PROVIDE MORE TREES, PARTICULARLY AROUND THE BOUNDARIES	RIVERSIDE PARK SPORTS RESERVE MASTERPLAN 2012-2021	
USER ACCESSIBILITY AND INCLUSIVITY	ENSURE DESIGN IS ACCESSIBLE TO THE AGEING POPULATION - INCLUDING ACCESSIBLE PATHS, CLEAR CONNECTIONS, PROVIDING SHADE, AND ACCESSIBLE TO TRANSPORT.	GANNAWARRA SHIRE COUNCIL PLAN 2021-2025	GANNAWARRA HAS AN AGEING POPULATION WITH 27.6% AGED OVER 65 YEARS.	ATTRACTING VISITORS AND TOURISTS TO THE REGION	IMPROVING FACILITIES THAT RELATE TO THE NATURE-BASED ASSETS IS A PRIORITY. INCLUDING BOATING, WATER SKIING, CANOEING, KAYAKING AND MOUNTAIN BIKING.	GANNAWARRA SHIRE COUNCIL SPORTS AND RECREATION STRATEGY 2019-2029	
	INCREASE FEMALE PARTICIPATION AND ACCESS. E.G. INCLUSION OF FEMALE FRIENDLY CHANGE-ROOMS.	GANNAWARRA SHIRE COUNCIL SPORTS AND RECREATION STRATEGY 2019-2029			FISHING, CAMPING, PASSIVE RECREATION AND WATER SPORTS ARE THE MAINSTAY OF VISITATION	GANNAWARRA STRATEGIC TOURISM PLAN 2015-2020	
	IMPROVE ACCESSIBILITY WITHIN KERANG POOL	GANNAWARRA SHIRE COUNCIL SPORTS AND RECREATION STRATEGY 2019-2029			EMERGING OPPORTUNITIES INCLUDE MOUNTAIN BIKING, CANOEING AND ORIENTEERING	GANNAWARRA STRATEGIC TOURISM PLAN 2015-2020	
	IMPROVEMENTS TO ACCESSIBILITY TO NATURAL ENVIRONMENT E.G. ALONG WATERWAYS, LAKES AND BUSHLAND	GANNAWARRA SHIRE COUNCIL SPORTS AND RECREATION STRATEGY 2019-2029			SUPPORT THE DEVELOPMENT OF APPROPRIATE WORLD CLASS BUSHWALKING EXPERIENCES AND FACILITIES IN VICTORIA	BUSHWALKING VICTORIA STRATEGIC PLAN 2020	
	LINK PEOPLE TO PLACES BY PROVIDING A GREAT RANGE OF INCLUSIVE, SAFE AND FUN ACTIVITIES.	COMMUNITY SAFETY PLAN 2012-2025			PROVIDING AND PROMOTING QUALITY TRAILS WITHIN TOWNS AND PARKS ENCOURAGES VISITORS TO STAY LONGER	GANNAWARRA WALKING AND CYCLING STRATEGY 2022	
	DEVELOP A PLAN TO MAKE PLAYGROUNDS ACROSS THE SHIRE ALL-ABILITIES ACCESSIBLE	GANNAWARRA SHIRE COUNCIL PLAN 2021-2025			UTILISE THE WATERWAYS TO DRAW PEOPLE IN, TO ENCOURAGE THEM TO STOP, SPEND AND STAY IN THE SHIRE	GANNAWARRA WALKING AND CYCLING STRATEGY 2022	
	PROVIDE FORMALISED CAR PARKING	RIVERSIDE PARK SPORTS RESERVE MASTERPLAN 2012-2021			IMPROVEMENTS TO PARK INFRASTRUCTURE SUCH AS PICNIC AREAS, CAMPING SITES AND TOILETS		

APPENDIX 2

USER MATRICES

USER MATRIX - ATKINSON PARK



USER / PEOPLE TYPE	LOCAL COMMUNITY PASSIVE RECREATION	TOURIST / VISITORS	CONNECTION AND PATHWAY USER	PLAYGROUND USERS	FITNESS EQUIPMENT USERS	EVENT VISITORS & ORGANISERS	MAINTENANCE PERSONNEL
PROFILE	Residents of Kerang use the park for year round passive activities such as; walking, dog walking, exercise, sitting and socialising.	Visitors travelling to Kerang or northern Victoria may pass through Atkinson Park as a rest stop as it is located off the Murray Valley Highway. It is located near Kerang CBD and the Caravan Park, making it a convenient location to gather.	The park also functions as a thoroughfare for locals and visitors, connecting them through to other areas within the town. Visitors staying at the Caravan Park may walk through the park to get to Kerang CBD.	Children and carers utilise the space and both of their needs will need to be considered.	The outdoor gym equipment can be used by community members. Ensuring that there are rest areas.	Different events such as the Kerang Community Market, Twilight Cinema, music events are just a few that occur within Atkinson Park.	Council employed park maintenance personnel managing the site including inspectors and landscape managers.
NEEDS	<ul style="list-style-type: none"> - Safe access (within and on the way to the reserve) and connectivity (DDA); - Path network; - Park furniture / water; - Open Space/vegetation - Wayfinding; - Educational signage; - Opportunities for active recreation; - Shade; - Parking. 	<ul style="list-style-type: none"> - Toilet access; - Park furniture / water; - Parking; - Shade / shelter. 	<ul style="list-style-type: none"> - Safe access (within and on the way to the reserve) and connectivity (DDA); - Shared path network suitable for bikes; - Bike racks / water; - Wayfinding; - Shade/Shelter; - Rest spots and seating. 	<ul style="list-style-type: none"> - Safe access (within and on the way to the reserve) and connectivity (DDA) with trolley/ pram ramps; - Path network; - Safe play equipment; - Park furniture; - Open Space; - Wayfinding; - Shade/shelter; - Parking; - Seating and resting areas; - Toilets and amenities. 	<ul style="list-style-type: none"> - Safe access (within and on the way to the reserve) and connectivity (DDA) with trolley/ pram ramps; - Path network; - Safe play equipment; - Park furniture; - Open Space; - Wayfinding; - Shade/shelter; - Parking; - Seating and resting areas; - Toilets and amenities. 	<ul style="list-style-type: none"> - Vehicle/truck access from roads to event areas and hardstands; - Defined and flexible event spaces; - Power / water; - Temporary exclusion area; - Parking; - Bus Parking; - Safe access and connectivity (DDA); - Shade/shelter; - Toilets and amenities. 	<ul style="list-style-type: none"> - Safe access (within and on the way to the reserve) and connectivity (DDA); - Shade; - Parking and access; - Toilets and amenities; - Wayfinding; - Sustainable and ecological solutions; - Healthy habitats; - Protection for flora and fauna.

USER MATRIX - KERANG REGIONAL PARK



USER / PEOPLE TYPE	LOCAL COMMUNITY PASSIVE RECREATION	TOURIST / VISITORS	EVENT VISITORS & ORGANISERS	MAINTENANCE PERSONNEL
PROFILE	Residents of Kerang use the park for year round passive activities such as; walking, dog walking, exercise, sitting and socialising.	Visitors travelling to Kerang or northern Victoria may visit Kerang Regional Park to do various activities such as hiking, swimming, mountain bike riding, fishing, bird watching, and kayaking.	Kerang Parkrun is a weekly community event that requires registering before commencing, with participants, spectators and volunteers getting involved.	Council employed park maintenance personnel managing the site including inspectors and landscape managers.
ESSENTIALS NEEDS	<ul style="list-style-type: none"> - Safe access (within and on the way to the reserve) and connectivity (DDA); - Path network; - Park furniture / water; - Open space/vegetation - Wayfinding; - Educational signage; - Opportunities / elements supportive of active recreation; - Shade; - Parking. 	<ul style="list-style-type: none"> - Toilet access; - Wayfinding; - Path network; - Seating and rest areas; - Water access; - Parking; - Shade / shelter. 	<ul style="list-style-type: none"> - Vehicle/truck access from roads to event areas and hardstands; - Defined and flexible event spaces; - Temporary exclusion area; - Parking; - Bus parking; - Safe access and connectivity (DDA); - Shade/shelter; - Toilets and amenities. 	<ul style="list-style-type: none"> - Safe access (within and on the way to the reserve) and connectivity (DDA); - Shade; - Parking and access; - Toilets and amenities; - Wayfinding; - Sustainable and ecological solutions; - Healthy habitats; - Protection for flora and fauna.

USER MATRIX - RIVERSIDE PARK RECREATION RESERVE



USER / PEOPLE TYPE	LOCAL COMMUNITY PASSIVE RECREATION	CONNECTION AND PATHWAY USER	FOOTBALL & NETBALL CLUB & SPORTING OVAL USERS	INDOOR SPORTS STADIUM USERS	CRICKET PRACTICE NETS	MAINTENANCE PERSONNEL
PROFILE	Residents of Kerang use the reserve for year round passive activities such as; walking, dog walking, exercise, sitting and socialising.	The reserve also functions as a thoroughfare for locals, connecting them through to other areas within the community. It can provide access to Kerang Regional Park and Loddon River.	Different sporting events occur at Riverside Park, such as football, cricket, netball and basketball. Each of the sports may have training, recreation and games on a weekly basis.	Basketball and badminton takes place in the indoor stadium, with training and games occurring regularly.	Cricketers use the outdoor practice nets. Although this encompasses a smaller area and users within the reserve.	Council employed park maintenance personnel managing the site including inspectors and landscape managers. Other users of the bushland area may be locals or visitors that may go walking or take refuge in this natural setting.
ESSENTIALS NEEDS	<ul style="list-style-type: none"> - Safe access (within and on the way to the reserve) and connectivity (DDA); - Path network; - Park furniture / water; - Open Space/vegetation - Wayfinding; - Educational signage; - Opportunities for active recreation; - Shade; - Parking. 	<ul style="list-style-type: none"> - Safe access (within and on the way to the reserve) and connectivity (DDA); - Shared path network suitable for bikes; - Bike racks / water; - Wayfinding; - Shade/Shelter; - Rest spots and seating. 	<ul style="list-style-type: none"> - Safe access (within and on the way to the reserve) and connectivity (DDA); - Fields and courts and equipment facilities to standard; - Parking and drop off point; - Toilet, change rooms and amenities; - Drinking water/taps; - Defined and flexible sporting spaces. 	<ul style="list-style-type: none"> - Safe access (within and on the way to the reserve) and connectivity (DDA); - Courts and equipment facilities to standard; - Parking and drop off point; - Toilet, change rooms and amenities; - Drinking water/taps; - Defined and flexible sporting spaces. 	<ul style="list-style-type: none"> - Safe access (within and on the way to the reserve) and connectivity (DDA); - Toilet, change rooms and amenities; - Drinking water/taps; - Shade/shelter; - Safe and functioning cricket equipment and lanes to standard. 	<ul style="list-style-type: none"> - Safe access (within and on the way to the reserve) and connectivity (DDA); - Shade; - Parking and access; - Toilets and amenities; - Wayfinding; - Sustainable and ecological solutions; - Healthy habitats; - Protection for flora and fauna.

APPENDIX 3

CONSULTATION FEEDBACK SUMMARY

COMMUNITY CONSULTATION FEEDBACK - ATKINSON PARK

THEME	FEEDBACK	RESPONDENTS / USERS
USAGE	<ul style="list-style-type: none"> Atkinson Park playground operates as a regional playground Skatepark used by 20min radius users; RSL Memorial – used during events such as ANZAC day and Remembrance Day; CFA – Tuesday and Thursday for training; Fitness station is quite popular; Gathering areas – picnics and BBQs get a lot used for birthday parties; Stage – music events, New Years Eve, Australia Day, Carols by Candlelight 	<ul style="list-style-type: none"> Kerang RSL Kerang Community Market use the park monthly Pre-COVID: 40 stalls, 350-400 patrons Currently 25-30 stalls, 400-500 patrons Gannawarra Children's Centre Once a month, excursion Ages 2-5 years old General local community; Tourists
ISSUES / CONSTRAINTS	<ul style="list-style-type: none"> Lack of lighting; Limited parking (including parking for caravans); Ground surface next to RSL Memorial can sometimes be inaccessible – unsafe for the elderly and people with mobility restrictions; 	
OPPORTUNITIES / SUGGESTIONS	<ul style="list-style-type: none"> Additional storage for community events/activities – chess pieces, market equipment, play equipment for the childcare centre; Additional seating areas for groups from Kerang childrens' centre; Sufficient lighting for events; Parking on Riverwood Drive; Overflow carpark and trees near the museum; Pram ramp crossing across the CFA running track; Reseal the CFA running track; Half/full basketball court; Upgrade footpaths (concrete); Pump track; Safe crossing from Atkinson Park to Sir John Gorton Precinct – across the highway; Tree planting along Museum Drive; Native/biodiversity garden on the south; Put hardscape footpath to/across the RSL memorial; Shelter next basketball court and near the playground; 	
EVENTS	<ul style="list-style-type: none"> Monthly community market, music events, New Years Eve, Australia Day, Carols by Candlelight, ANZAC Day, and Remembrance Day 	

COMMUNITY CONSULTATION FEEDBACK - KERANG REGIONAL PARK

THEME	FEEDBACK	RESPONDENTS / USERS
USAGE	<ul style="list-style-type: none"> Landcare think approximately 50-200 people walk through the park per day, possibly less in the summer due to snake; Average 3-4 times a week; Generally 2 hours time of use Main uses are walking, jogging, bird watching, fishing, kayaking/canoeing, and cycling The Kerang Park run has at least 20 participants weekly Weekly free community sport and recreation event for runners, walkers, and volunteers to promote physical exercise and social interaction. 	<ul style="list-style-type: none"> Parkrun members; Kerang Landcare; Kerang Pistol Club; Event organisers / entities; General local community; Tourists Parks Victoria (TBC)
ISSUES / CONSTRAINTS	<ul style="list-style-type: none"> Lack of lighting; Lack of toilets; Lack of BBQ facilities; Ground needs to be regraded; Weed control – at the Mill drain; Management issue; Lack of signage; Flooding – walking tracks become inundated; Native vegetation/Lignum is acting as a barrier; Campers, anglers and kayak users entering the area and parking prior to landcare shutting the gate; The international parkrun body has a strict 'no road' policy for all events. We must do a course check prior to the event, if a vehicle is found a marshall must be organised. We are able to lock the gates for during the event but the issue is locking people in and causing bad publicity; Vehicles damage walking tracks; Canoe/kayak launch is too steep / unsafe; Information boards are outdated; Pistol Club is not popular – potential to relocate? 	

COMMUNITY CONSULTATION FEEDBACK - KERANG REGIONAL PARK

THEME	FEEDBACK	RESPONDENTS / USERS
OPPORTUNITIES / SUGGESTIONS	<ul style="list-style-type: none"> • Storytelling path ; • Info board about ecosystems/environment, Indigenous history, history of Kerang, timeline, etc.; • More walking/cycling tracks; • Bird hide / bird watching pods; • Activation of the waterfront close to the mill drain bridge; • Re-contruction of the Kayak launching to be compliant; • Maintenance of the Lignum; • Directional signage from the town; • More parking; • Trail / distance markers; • 'Memory Walk' to South East of the park; • Wyndham St trail head – provide more infrastructure, including BBQ, toilets; • Shared zone through Wyndham St for a more pedestrian friendly zone / arrival to the park; • Wayfinding and signage; • Remove/relocate Pistol Club and introduce an open space, amphitheatre space, potential for café; • Toilet and BBQ facilities; • Rubbish bins for dog poo bags; • Weed removal, especially along the levee track – would help with discouraging snakes; • Signage to say the gates are locked 7.30 to 9.30am every Saturday morning for parkrun; • Signage reminding dog owners to pick up after their pets; • Free camping area and car parking. My suggestion would be to utilise the vacant land in front of the pistol club. This could possibly assist the club in not having to maintain so much land; • Potential connection between north-south of Murray Valley Highway and link towards the CBD / Atkinson Park. 	<ul style="list-style-type: none"> • Parkrun members; • Kerang Landcare; • Kerang Pistol Club; • Event organisers / entities; • General local community; • Tourists • Parks Victoria (TBC)
EVENTS	<ul style="list-style-type: none"> • Fishing Competition; • Parkrun. 	

COMMUNITY CONSULTATION FEEDBACK - RIVERSIDE PARK RECREATION RESERVE

THEME	GENERAL FEEDBACK	RESPONDENTS / USERS
USAGE	<ul style="list-style-type: none"> Oval – football, cricket, school students Stadium – basketball, volleyball, badminton, dance classes, workshops, flower shows/art shows Courts – netball, basketball 	<ul style="list-style-type: none"> Riverside Park Committee of Management (includes representatives from Football, Netball, Cricket, Badminton and Basketball) Club members / parents; Event / games organisers / entities; General local community; Town visitors for games / events.
ISSUES / CONSTRAINTS	<p>Indoor stadium:</p> <ul style="list-style-type: none"> 2 undersized courts, and 1 full sized court (too many lines/confusing) Shed is okay Termites causing building damage Toilet/change rooms outdated <p>Ovals:</p> <ul style="list-style-type: none"> Safety concern with traffic and pedestrian flow Lack of undercover facilities Lack of lights Irrigation Alignment of oval (affects traffic flow) 	
OPPORTUNITIES / SUGGESTIONS	<p>Indoor stadium:</p> <ul style="list-style-type: none"> Provide 2 full sized courts Demolish and build new and/or relocate the stadium Upgrade outdoor courts Upgrade toilet/changerooms <p>Oval:</p> <ul style="list-style-type: none"> Realign the oval Traffic management / pedestrian flow Sufficient lighting for games Solar lighting for pedestrians – potential to have sensor lighting Irrigation / sprinkler system Undercover spectator space Toilets and umpire room Electronic scoreboard Storage areas for equipment and maintenance Redesign the whole site – realign ovals, relocate the indoor stadium, provide new netball/basketball courts, include playground 	
EVENTS	<ul style="list-style-type: none"> Football/ Cricket games; Basketball/ Volleyball/ Badminton/ Netball games; Dance/flower events. 	

COMMUNITY CONSULTATION FEEDBACK - RIVERSIDE PARK RECREATION RESERVE

CLUB	OTHER FINDINGS	RESPONDENTS / USERS
<p>WANDELLA CRICKET CLUB</p>	<ul style="list-style-type: none"> In 2022/23 the club reported 80 members and fielded 5 teams (3 senior, 2 junior). The club does not have a female team at present. The club uses the west oval at Riverside Park for junior and senior matches and share the east oval with the Kerang Cricket Club. The existing shed in the southwest corner of the site is used as the club's change room, social area and equipment storage. Under their agreement with Council, the club is responsible for maintaining the fields and surrounds. This includes watering and mowing. The club would like more support from Council in this area due to the impact on volunteers. A new irrigation system, increased building security and additional equipment storage were identified as high priorities by the club. Riverside Park have hosted Country Week cricket carnivals that attract visitors from outside the region. The club believes that improved facilities at Riverside Park would result in additional hosting opportunities and increased visits to Kerang , supporting the local economy. 	<ul style="list-style-type: none"> Wandella Cricket Club Kerang Football Netball Club
<p>KERANG FOOTBALL / NETBALL CLUB</p>	<ul style="list-style-type: none"> In 2022/23 the football club reported 176 members and fielded 10 teams (7 male, 3 female). This include six junior teams and four senior teams (includes Under 19s). Football team numbers have been similar across the previous three seasons. The club anticipates this to continue and will work hard to retain existing members by offering healthy club culture. Whilst the football club expects senior women's football numbers to decline, the focus is to increase numbers in Auskick and junior girls football. The netball club currently has 82 players across five junior teams and 4 senior teams. Similar numbers were reported for netball in the 2021 season The football club uses the west oval at Riverside Park for training and matches and the east oval for training only. The Indoor basketball courts are used by both football and netball ad hoc during winter. The courts are used for training purposes several times a season. Further use of social media, advertising and promotion to showcase the clubs activities, its culture and the facilities is a priority for the football and netball club. The club is focused on educating existing members on the advantages of technology. 	

SYDNEY

Level 7, 80 William Street
East Sydney NSW 2011
Australia

MELBOURNE

Level 5, 145 Russell Street
Melbourne VIC 3000
Australia

BRISBANE

Level 14, 100 Edward Street
Brisbane QLD 4000
Australia

HO CHI MINH CITY

19th Floor – Havana Tower, 132 Ham Nghi,
Ben Thanh Ward, District 1, Ho Chi Minh City
Vietnam

