

Waste Management Services, Bins – Provision and Replacement

COUNCIL POLICY NO. 060

1. POLICY PURPOSE

To document Gannawarra Shire Council's commitment to managing kerbside waste services.

2. SCOPE

This policy:

Complies with legislation, regulations, industry codes; Council policy, agreements and other organisational requirements and Council values identified in the Council Plan.

3. POLICY

Gannawarra Shire Council is committed to:

A Standard Service consists of 1 x 120L bin for waste and 1 x 240L bin for recycling and from 2023 a 120L bin for glass. Council may provide a 240L bin for waste upon request.

3.1 Compulsory Service to Residential Properties

- Council will provide a standard service to all residential properties (other than vacant land) within the township boundaries as shown on the town boundary maps appended to this policy.
- The charge set by Council for this service will be payable whether or not the service is utilised.
- Multiple garbage and recycling bins can be supplied on request and will be additionally charged at the standard charge per service. Only one extra recycling bin can be provided at no additional charge.

3.2 Optional service to rural properties, commercial and industrial properties

- Council may provide a standard service to residences on rural properties, commercial and industrial properties by agreement. The charge set by Council will be payable whether or not the service is utilised.
- Multiple garbage and recycling bins can be supplied on request and will be additionally charged at the standard charge per service. Only one extra recycling bin can be provided at no additional charge. One or multiple 240L bins may be provided in the waste service to food service premises at the discretion of the Director of Infrastructure and Development, where skip bins have been prohibited.

3.3 Optional Service to all properties in townships, as approved by Council.

- Council may provide a green waste service to residential properties (other than vacant land), commercial and industrial properties in townships, as approved by Council, by agreement (as defined by the attached maps). The charge set by Council will be payable whether or not the service is utilised.
- Multiple 240L green waste bins can be supplied on request and will be additionally charged at the standard charge per service set by Council.

3.4 Replacement of Bins

- Replacement of bins will generally be in accordance with the specifications of the contract relating to the provision of the waste management service (within 14 days of receipt of notification).
- Replacement of bins will be at Council's expense where –
 - The bin has been damaged by collection equipment
 - The bin has been stolen after collection and the matter has been reported by the owner or ratepayer to Police and Council (notification to Council and Police within seven working days of collection)
- Replacement of bins be at the owners or ratepayers expense where -
 - The bin has been damaged or destroyed by actions of the owner, ratepayer or tenant
 - The bin has been stolen after collection and the matter has not been reported to Police and Council within seven working days of the day of collection
 - Or any other reason not stated above.

4. POLICY REVIEW

Council will review this policy as required but always within two years after a general election of the Council.

At the time of review, this policy was compliant with the *Victorian Charter of Human Rights and Responsibilities Act 2006*.

5. FURTHER INFORMATION

Members of the public may inspect all Council policies at Gannawarra Shire Council's Kerang and Cohuna office or online at www.gannawarra.vic.gov.au.

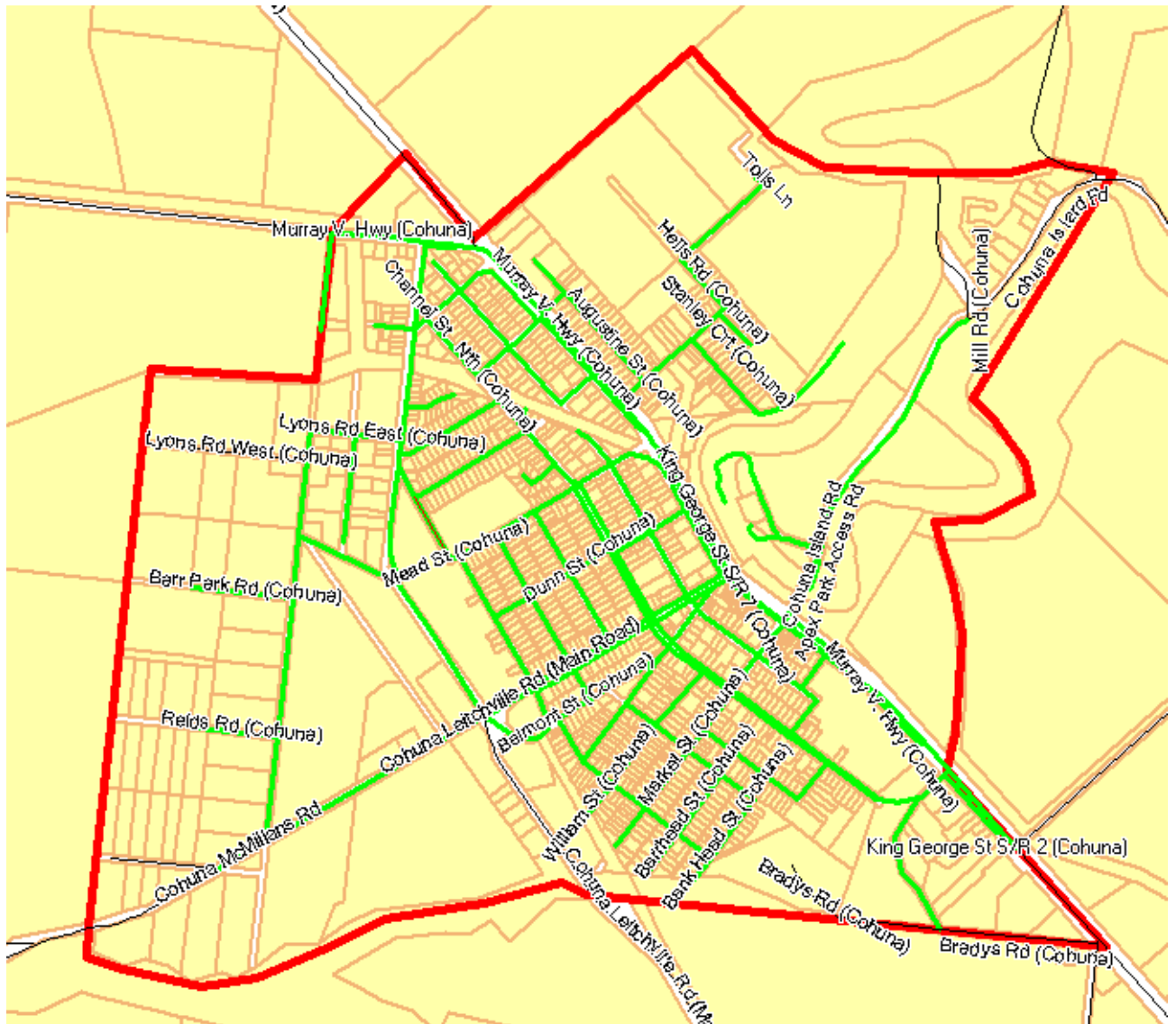
Any enquiries in relation to this policy should be directed to the Chief Executive Officer on (03) 5450 9333.

Altus ECM Folder: 3.000518

Originally adopted: 1995

Reviewed:	13/11/2002	Minute Book Reference:	2455
Reviewed:	22/08/2007	Minute Book Reference:	6013
Reviewed:	25/06/2008	Minute Book Reference:	6625
Reviewed	17/11/2010	Minute Book Reference	8382
Reviewed	23/06/2015	Minute Book Reference	11715
Reviewed	16/05/2018	Minute Book Reference:	12667
Reviewed	16/05/2018	Minute Book Reference:	12667
Reviewed	21/07/2021		
To be reviewed by	2026		

1. COHUNA – TOWNSHIP BOUNDARY – COMPULSORY WASTE SERVICE MAP



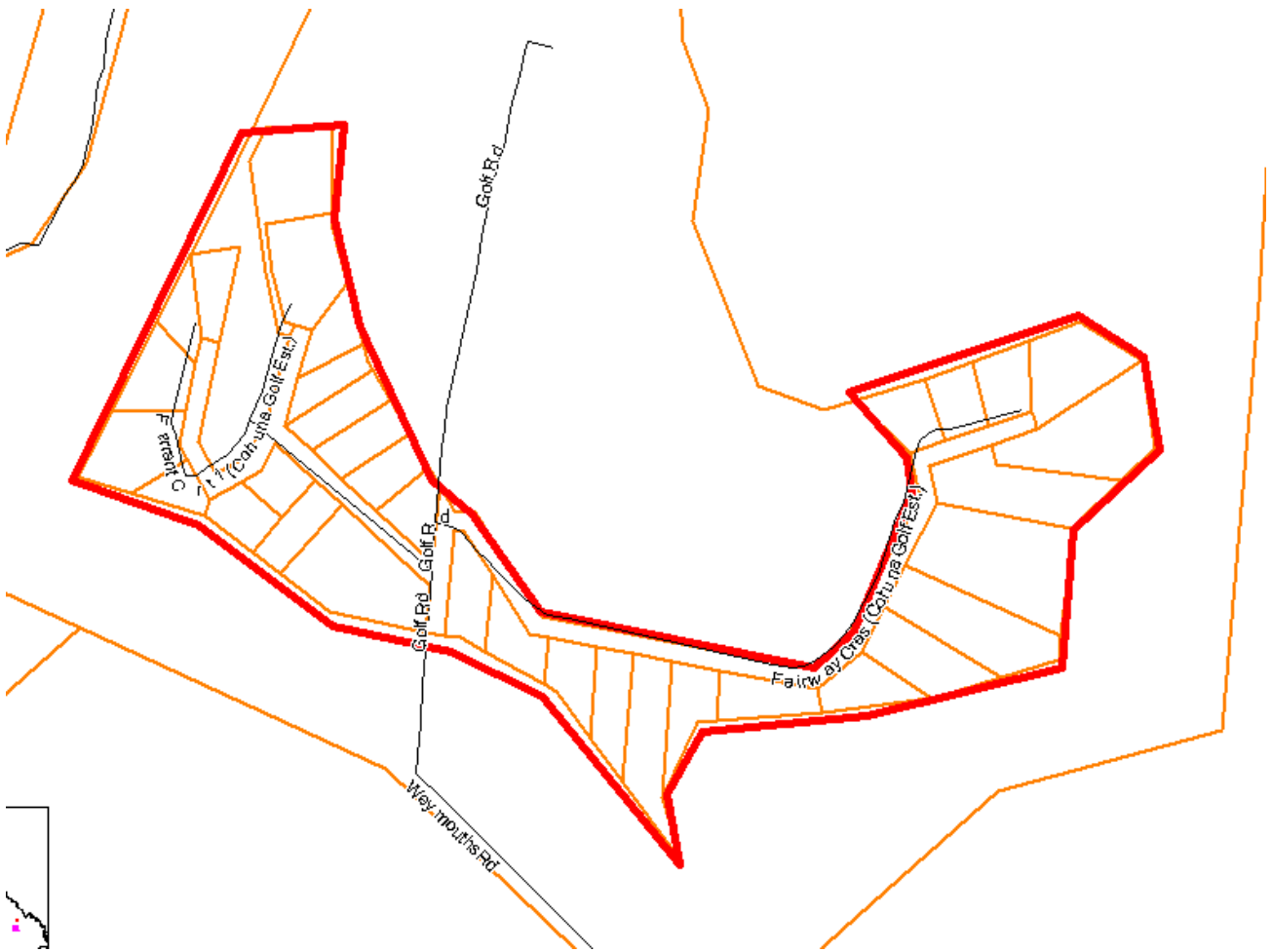
About this Document

This map has been created for the purpose of showing basic locality information over Gannawarra Shire Council. Property boundary line network data is supplied by State Government. Any error should be reported to the GIS Section, Gannawarra Shire Council.

Disclaimer

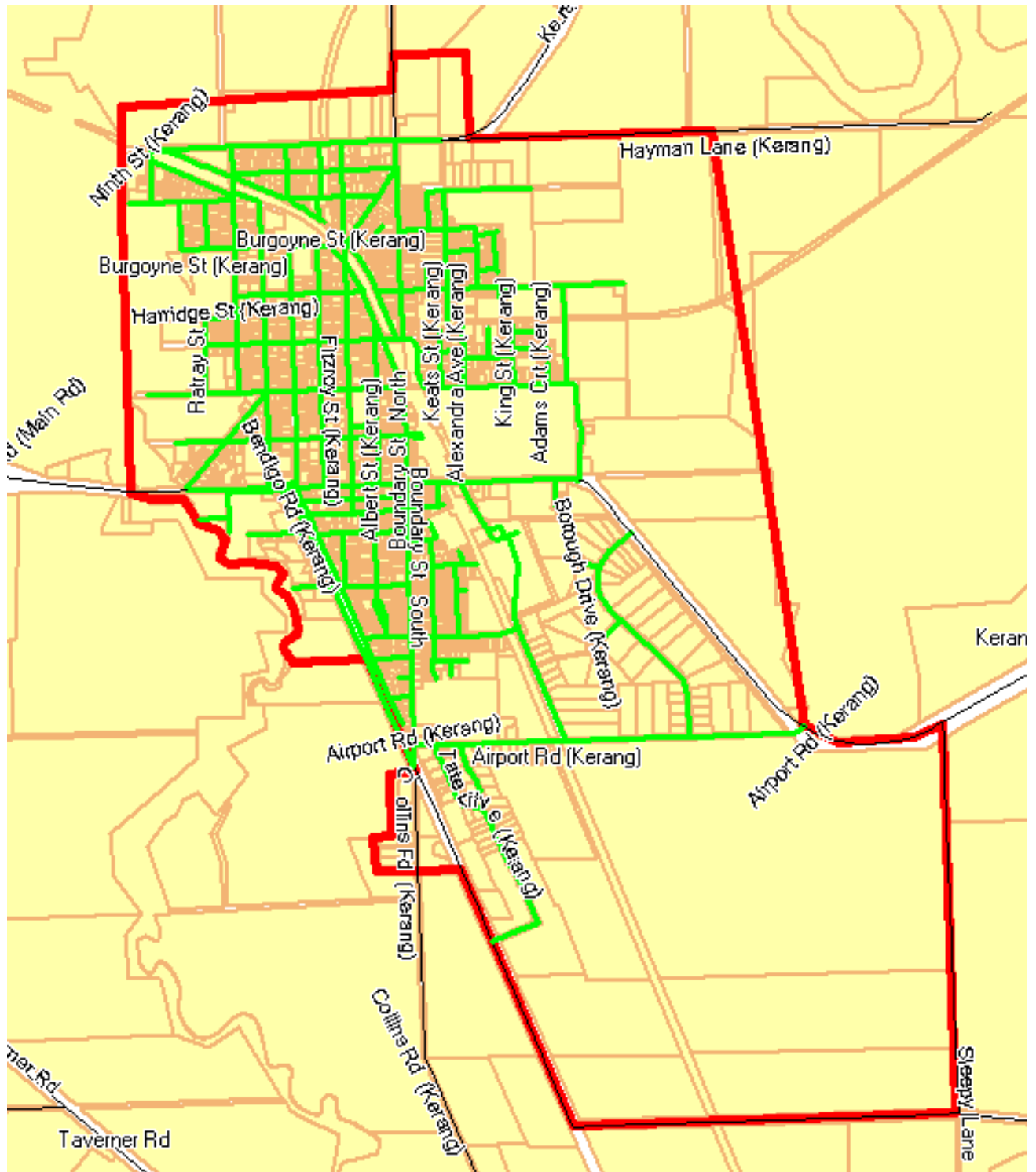
This map is a representation of the information currently held by Gannawarra Shire Council. While every effort has been made to ensure the accuracy of the product, Council accepts no responsibility for any errors or omissions. Any feedback on omissions or errors would be appreciated.

2. COHUNA GOLF LINKS ESTATE—TOWNSHIP BOUNDARY – COMPULSORY WASTE SERVICE MAP



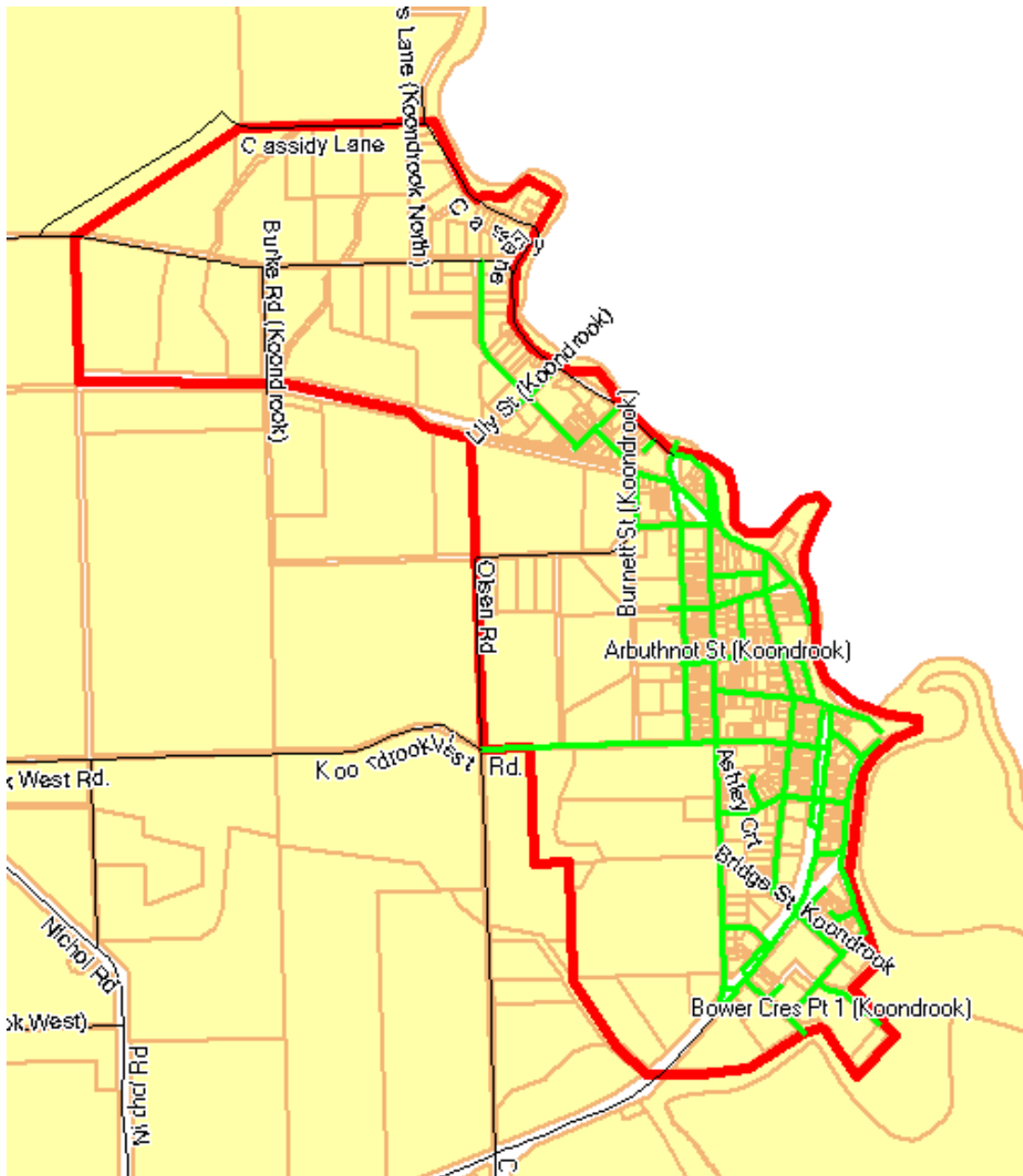
About this Document	Disclaimer
<p>This map has been created for the purpose of showing basic locality information over Gannawarra Shire Council. Property boundary line network data is supplied by State Government. Any error should be reported to the GIS Section, Gannawarra Shire Council.</p>	<p>This map is a representation of the information currently held by Gannawarra Shire Council. While every effort has been made to ensure the accuracy of the product, Council accepts no responsibility for any errors or omissions. Any feedback on omissions or errors would be appreciated.</p>

3. KERANG – TOWNSHIP BOUNDARY – COMPULSORY WASTE SERVICE MAP



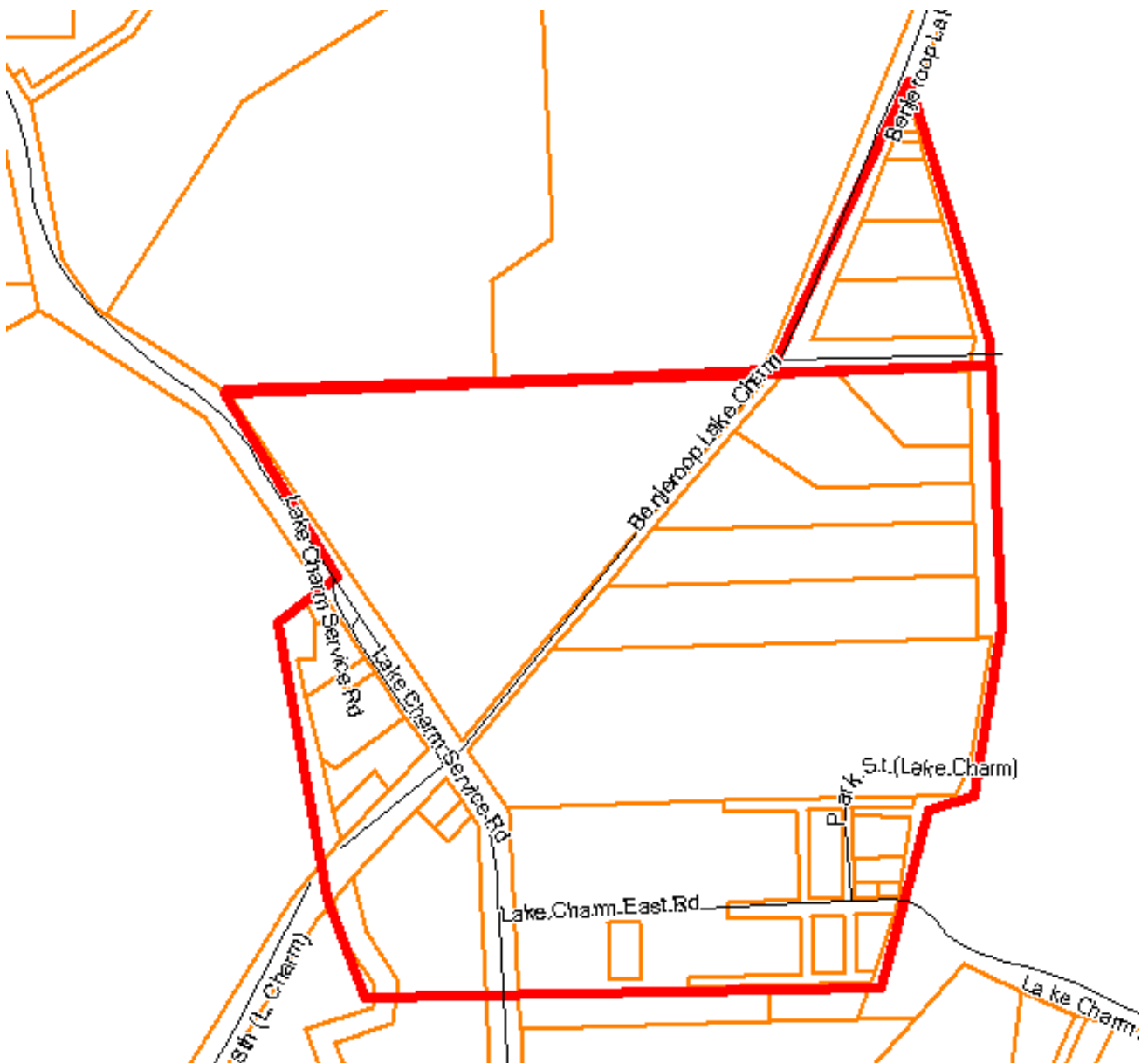
Map Zoom: 7.399 km	
About this Document	Disclaimer
This map has been created for the purpose of showing basic locality information over Gannawarra Shire Council. Property boundary line network data is supplied by State Government. Any error should be reported to the GIS Section, Gannawarra Shire Council.	This map is a representation of the information currently held by Gannawarra Shire Council. While every effort has been made to ensure the accuracy of the product, Council accepts no responsibility for any errors or omissions. Any feedback on omissions or errors would be appreciated.

4. KOONDRUCK – TOWNSHIP BOUNDARY – COMPULSORY WASTE SERVICE MAP



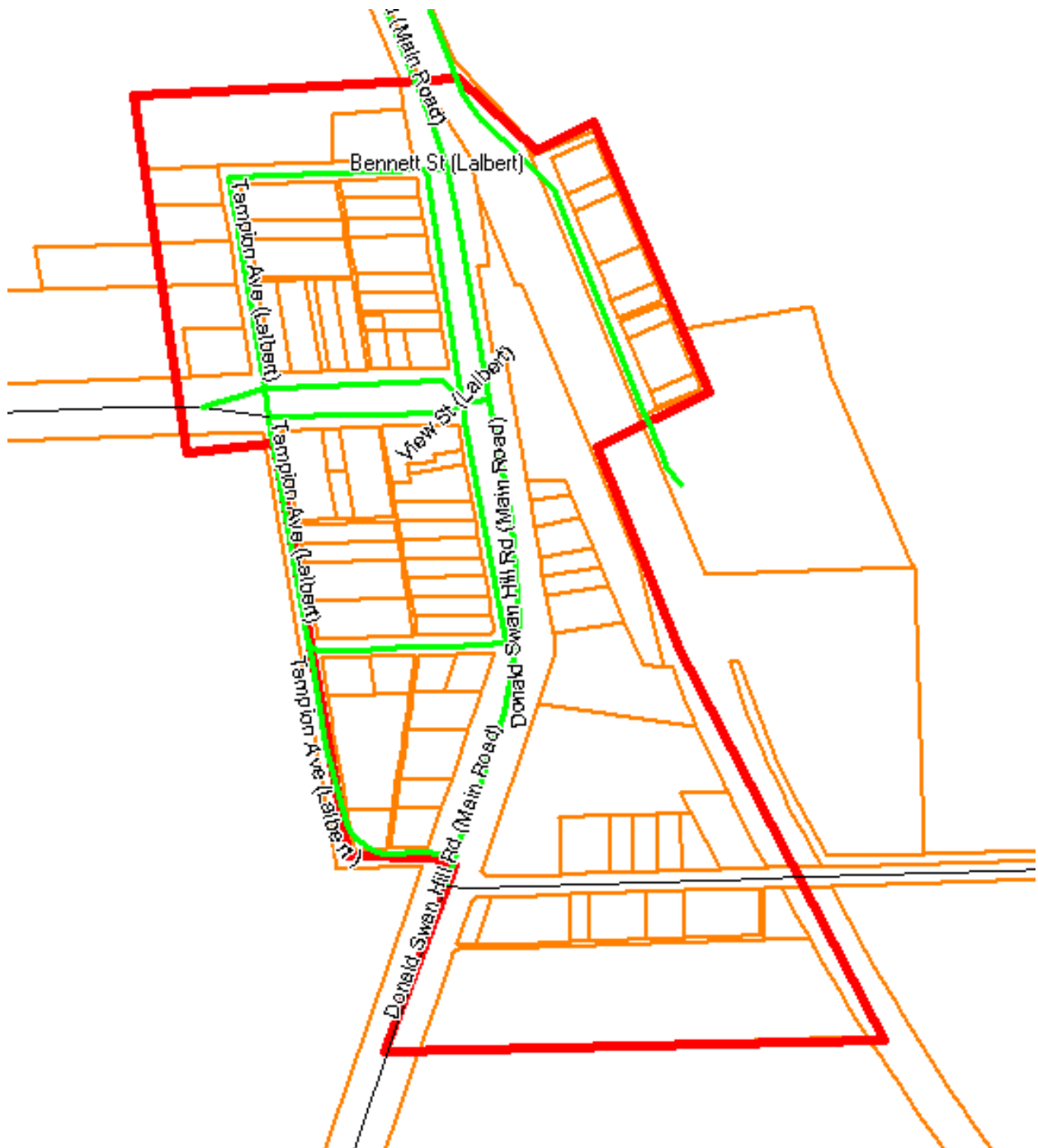
About this Document	Disclaimer
<p>This map has been created for the purpose of showing basic locality information over Gannawarra Shire Council. Property boundary line network data is supplied by State Government. Any error should be reported to the GIS Section, Gannawarra Shire Council.</p>	<p>This map is a representation of the information currently held by Gannawarra Shire Council. While every effort has been made to ensure the accuracy of the product, Council accepts no responsibility for any errors or omissions. Any feedback on omissions or errors would be appreciated.</p>

5. LAKE CHARM – TOWNSHIP BOUNDARY – COMPULSORY WASTE SERVICE MAP



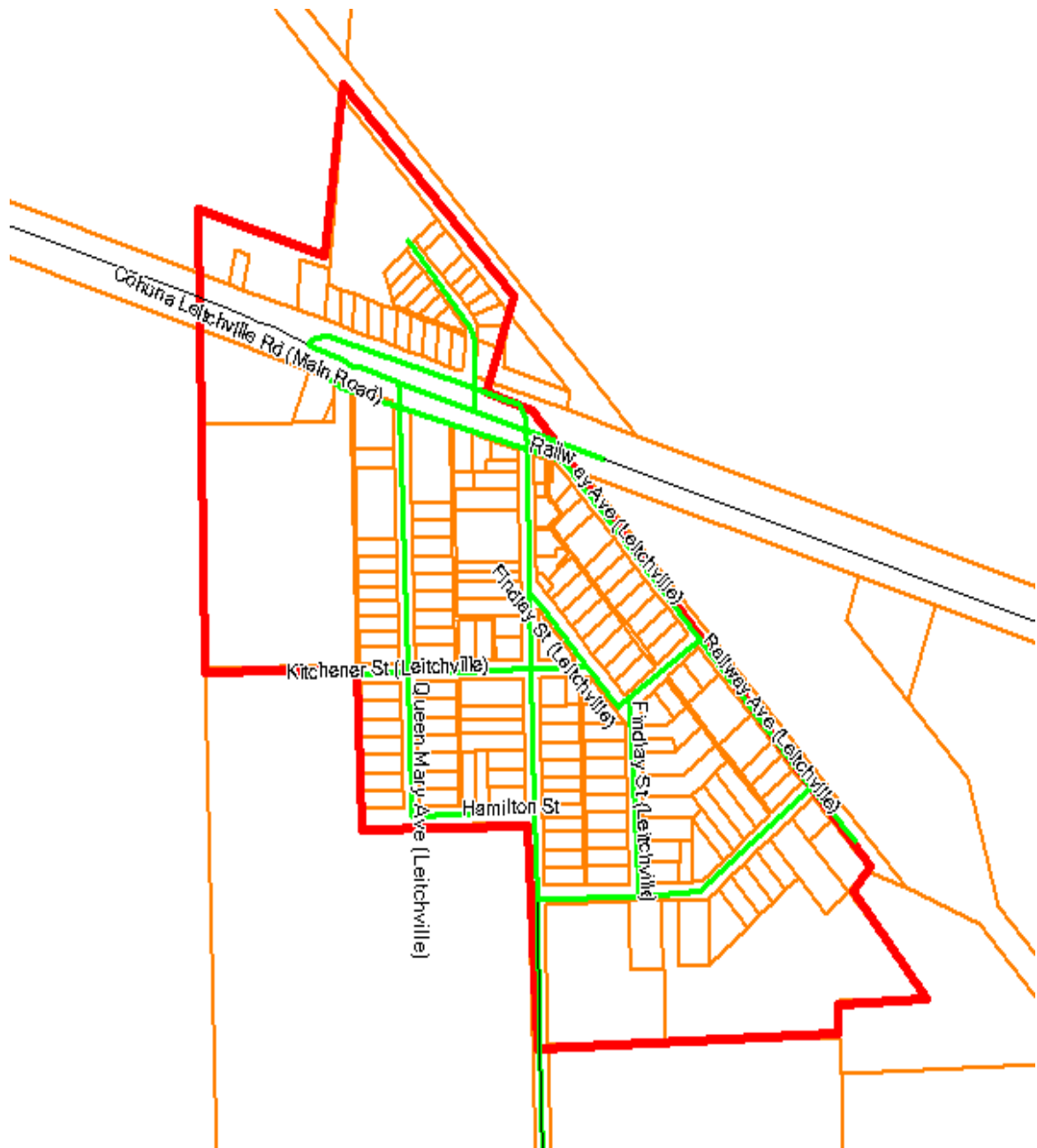
About this Document	Disclaimer
<p>This map has been created for the purpose of showing basic locality information over Gannawarra Shire Council. Property boundary line network data is supplied by State Government. Any error should be reported to the GIS Section, Gannawarra Shire Council.</p>	<p>This map is a representation of the information currently held by Gannawarra Shire Council. While every effort has been made to ensure the accuracy of the product, Council accepts no responsibility for any errors or omissions. Any feedback on omissions or errors would be appreciated.</p>

6. Lalbert – Township Boundary – Compulsory Waste Service Map



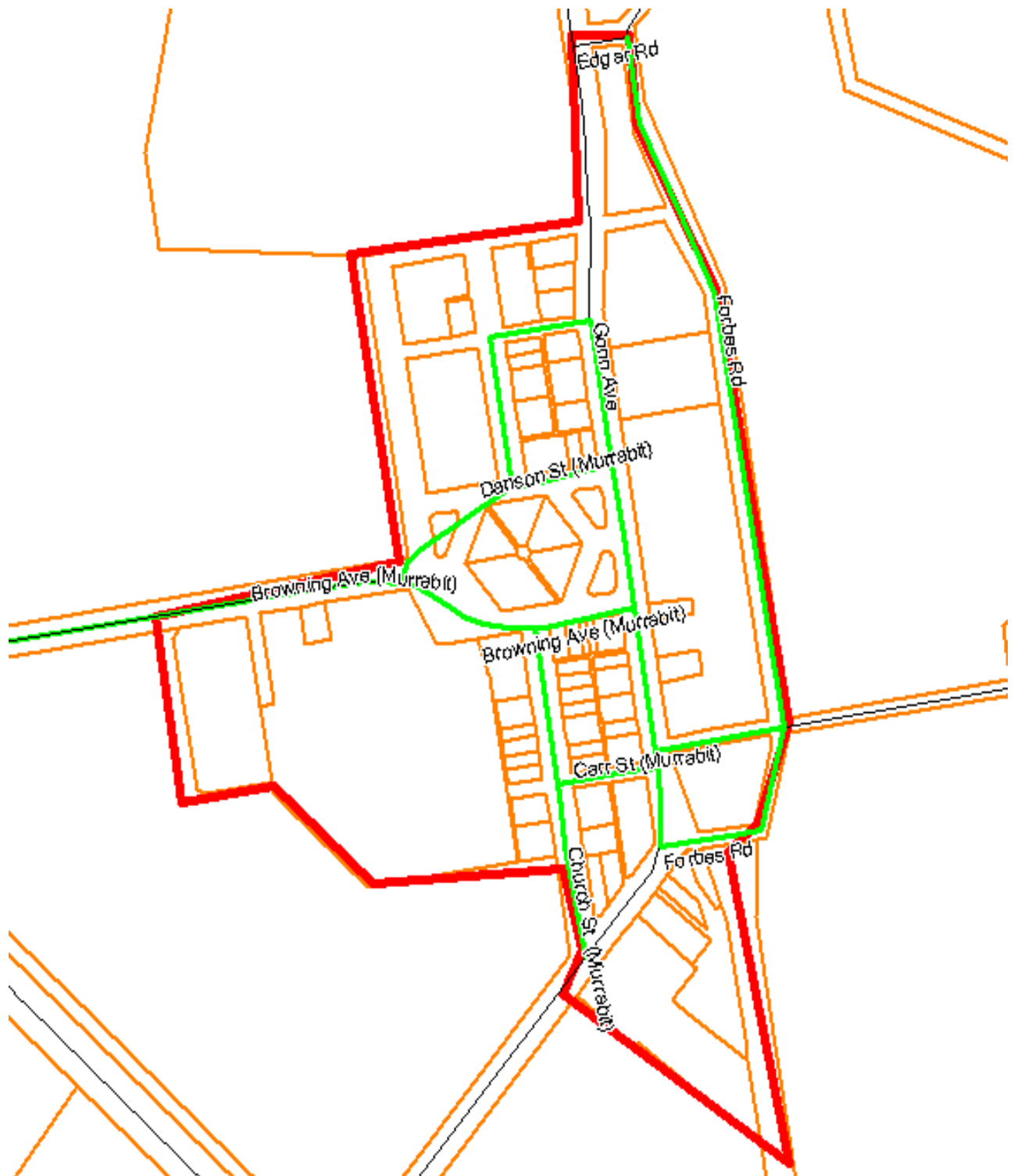
About this Document	Disclaimer
<p>This map has been created for the purpose of showing basic locality information over Gannawarra Shire Council. Property boundary line network data is supplied by State Government. Any error should be reported to the GIS Section, Gannawarra Shire Council.</p>	<p>This map is a representation of the information currently held by Gannawarra Shire Council. While every effort has been made to ensure the accuracy of the product, Council accepts no responsibility for any errors or omissions. Any feedback on omissions or errors would be appreciated.</p>

7. Leitchville – Township Boundary – Compulsory Waste Service Map



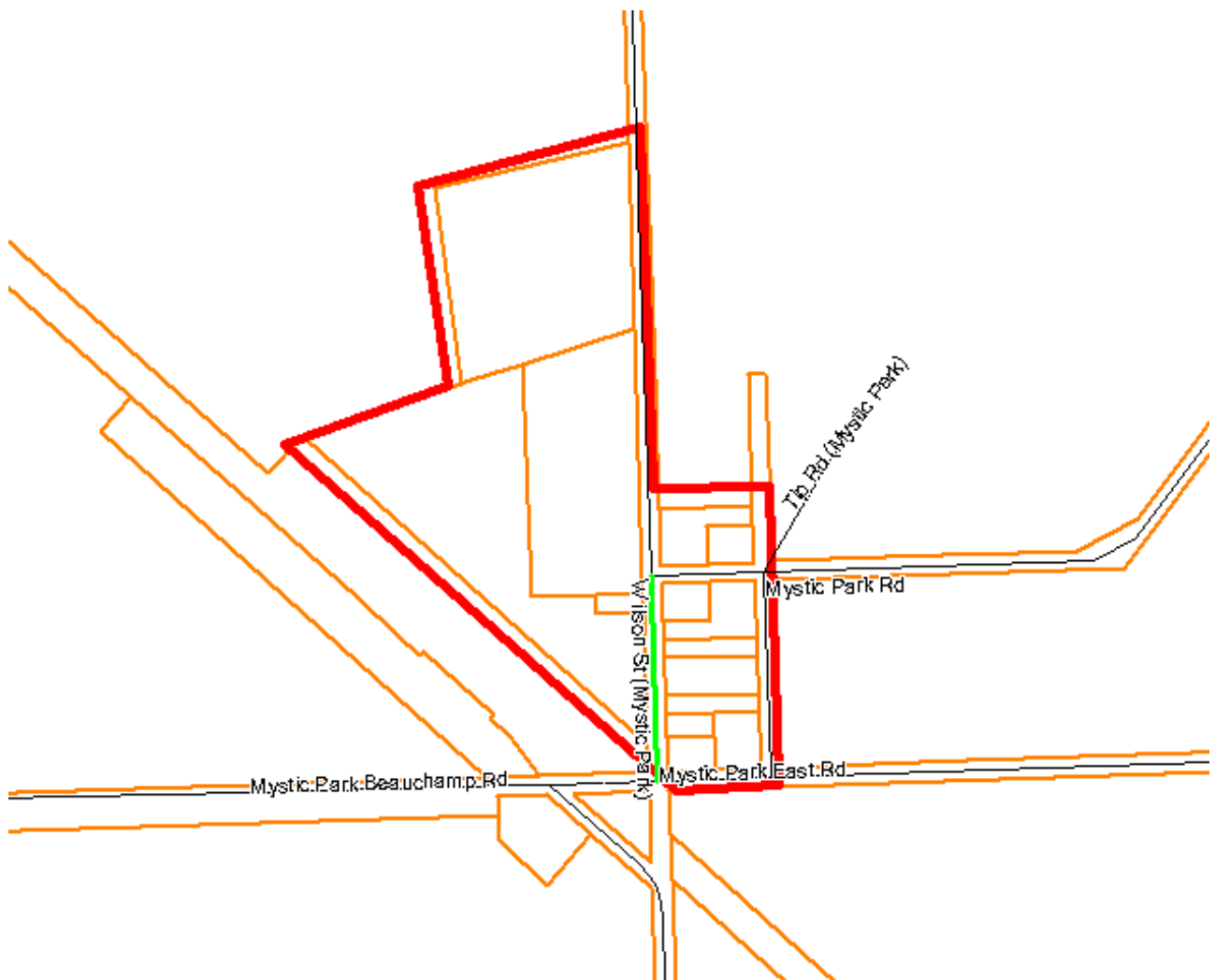
About this Document	Disclaimer
<p>This map has been created for the purpose of showing basic locality information over Gannawarra Shire Council. Property boundary line network data is supplied by State Government. Any error should be reported to the GIS Section, Gannawarra Shire Council.</p>	<p>This map is a representation of the information currently held by Gannawarra Shire Council. While every effort has been made to ensure the accuracy of the product, Council accepts no responsibility for any errors or omissions. Any feedback on omissions or errors would be appreciated.</p>

8. Murrabit – Township Boundary – Compulsory Waste Service Map



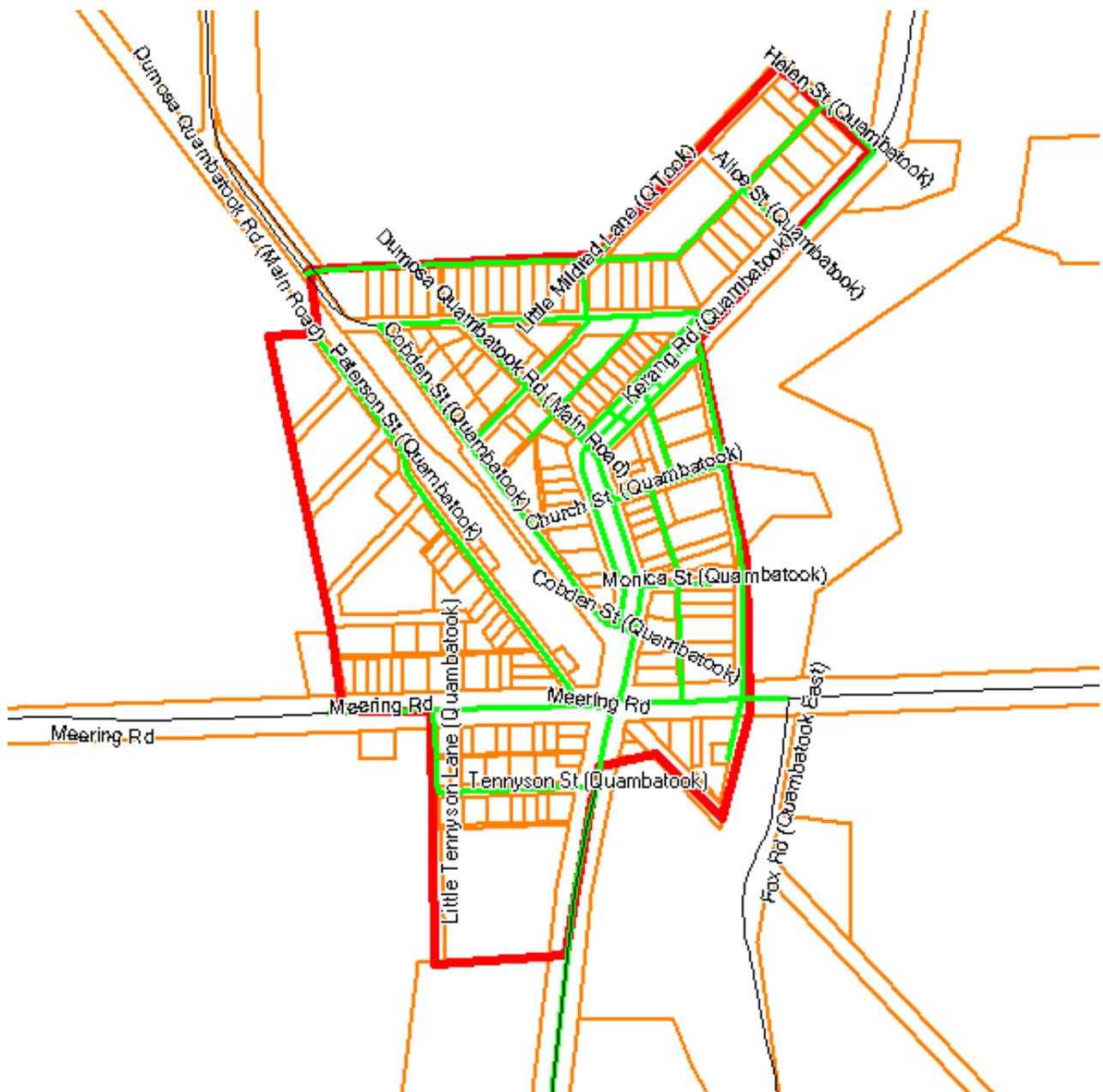
About this Document	Disclaimer
<p>This map has been created for the purpose of showing basic locality information over Gannawarra Shire Council. Property boundary line network data is supplied by State Government. Any error should be reported to the GIS Section, Gannawarra Shire Council.</p>	<p>This map is a representation of the information currently held by Gannawarra Shire Council. While every effort has been made to ensure the accuracy of the product, Council accepts no responsibility for any errors or omissions. Any feedback on omissions or errors would be appreciated.</p>

9. Mystic Park – Township Boundary – Compulsory Waste Service Map



About this Document	Disclaimer
This map has been created for the purpose of showing basic locality information over Gannawarra Shire Council. Property boundary line network data is supplied by State Government. Any error should be reported to the GIS Section, Gannawarra Shire Council.	This map is a representation of the information currently held by Gannawarra Shire Council. While every effort has been made to ensure the accuracy of the product, Council accepts no responsibility for any errors or omissions. Any feedback on omissions or errors would be appreciated.

10. QUAMBATOOK – TOWNSHIP BOUNDARY – COMPULSORY WASTE SERVICE MAP



About this Document	Disclaimer
<p>This map has been created for the purpose of showing basic locality information over Gannawarra Shire Council. Property boundary line network data is supplied by State Government. Any error should be reported to the GIS Section, Gannawarra Shire Council.</p>	<p>This map is a representation of the information currently held by Gannawarra Shire Council. While every effort has been made to ensure the accuracy of the product, Council accepts no responsibility for any errors or omissions. Any feedback on omissions or errors would be appreciated.</p>